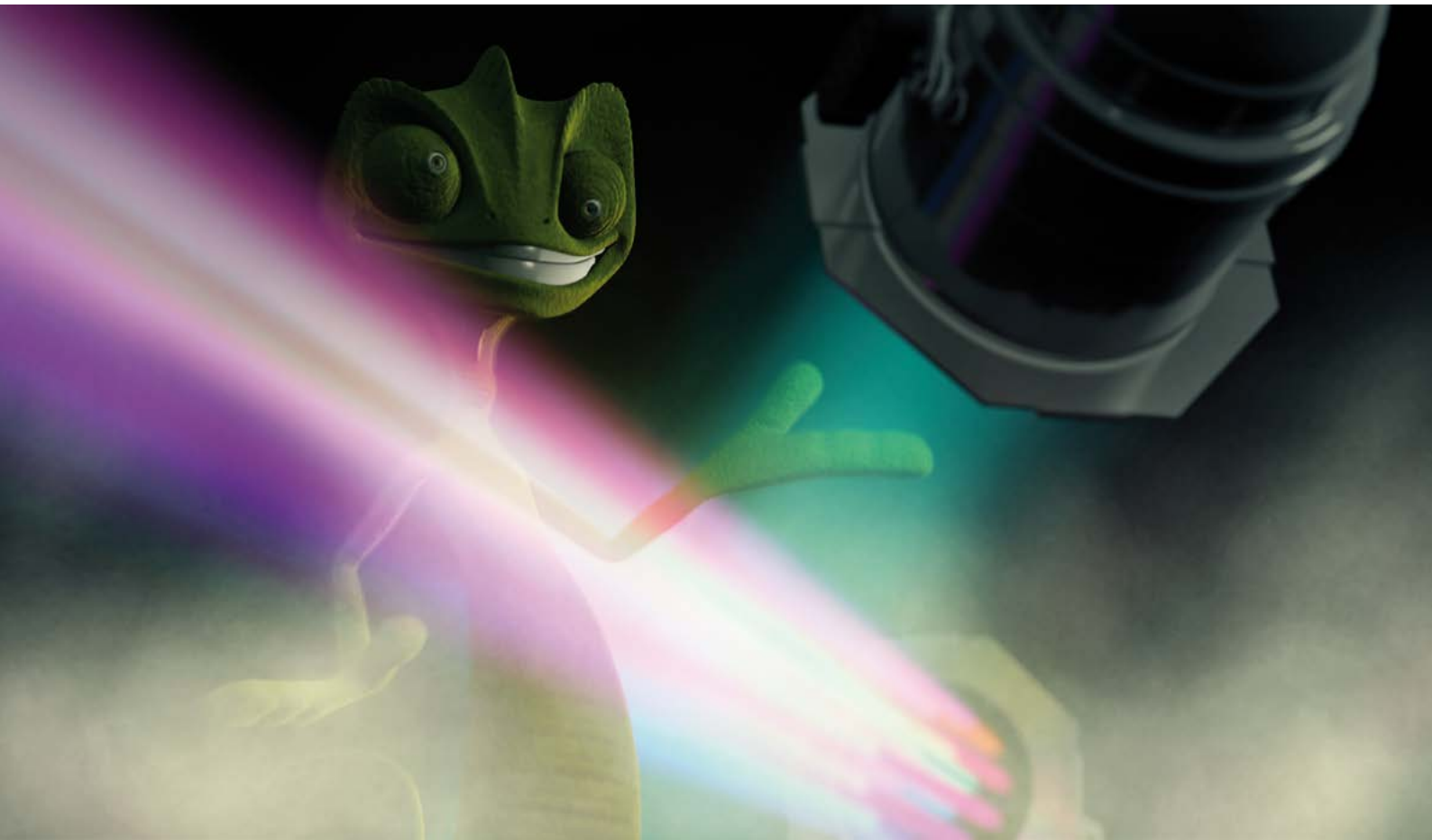




cameo[®]
colours of light



PRODUCT
CATALOGUE
2013

TABLE OF CONTENT



Cameo® Light is the **new emerging brand** in the world of **professional lighting equipment**. Alongside studio & standard PAR cans, lighting units and effects with the latest LED technology, the product line for 2013 is being continuously expanded to include moving heads, strobes, COB LED PAR cans and their respective accessories.

All Cameo lighting products are designed to be user-friendly and intuitive to operate – and always with the **goal of offering high-quality products featuring the latest technology at attractive prices.**

Maintaining good communications and exchanging ideas with our customers and partners are extremely important to our work in this dynamic field. It is only through these that we can keep improving our products. **Please send us your feedback by e-mail, on Facebook or YouTube, via our blog or simply by phone.**

We hope you enjoy browsing our catalogue.

Your **Cameo® Light** team



Cameo® Light ist die **neue aufstrebende Marke** in der Welt des **professionellen Lichtequipments**. Neben Studio & Standard PAR Kannen, Lichtenlagen & Effekte mit modernstem LED Innenleben, wird sich die Produktpalette 2013 um Moving Heads, Strobes, COB LED PAR Kannen und passendem Zubehör kontinuierlich erweitern.

Alle Cameo Light Produkte werden benutzerfreundlich und intuitiv gestaltet. Stets mit dem **Anspruch ein qualitativ hochwertiges Produkt mit moderner Technologie zu attraktiven Preisen anbieten zu können.**

Die individuelle Kommunikation und der Ideenaustausch mit unseren Kunden und Partnern sind uns in diesem dynamischen Umfeld daher sehr wichtig. Nur so sind wir in der Lage unsere Produkte kontinuierlich zu verbessern. **Geben Sie uns auch Ihr Feedback per email, auf Facebook, YouTube, im Blog oder telefonisch.**

Viel Spass beim Durchblättern.

Ihr **Cameo® Light** Team



Cameo® Light es la nueva marca en auge en el ámbito de los **equipos de iluminación profesional**. Junto a los focos PAR estándar y para estudio, equipos de iluminación y efectos con la más moderna tecnología LED en su interior, el catálogo de productos ofrece en 2013 una ampliación permanente con cabezas móviles, luces estroboscópicas, focos COB LED PAR y los accesorios correspondientes.

Todos los productos Cameo Light están diseñados con criterios de usabilidad y manejo intuitivo. Y siempre con la **aspiración de poder ofrecer un producto de elevada calidad dotado de moderna tecnología y precios atractivos.**

De ahí la gran importancia que tienen para nosotros la comunicación personalizada y el intercambio de ideas con nuestros clientes y asociados dentro de este dinámico entorno. Solo actuando así estamos en condiciones de seguir mejorando continuamente nuestros productos. **Háganos llegar usted también su opinión, por correo electrónico, en Facebook o YouTube, en el blog o por teléfono.**

Le deseamos agradables momentos hojeando nuestro catálogo.

Un atento saludo del equipo **Cameo® Light**



Cameo® Light est la **nouvelle marque en plein essor** dans le domaine de **l'éclairage professionnel**. En plus de projecteurs PAR classiques et de studio, de systèmes d'éclairage et d'effets lumineux à technologie LED de pointe, vous trouverez dans la gamme de produits proposée en 2013 des têtes mobiles, des stroboscopes, des projecteurs PAR LED COB et tous les accessoires adaptés.

Les produits Cameo Light sont conçus pour une utilisation aisée et intuitive. **Notre ambition est de proposer un produit de qualité optimale avec une technologie moderne à des prix intéressants.**

C'est pourquoi, dans le contexte actuel très dynamique, nous attachons une grande importance à une communication personnalisée et à l'échange d'idées avec nos clients et nos partenaires. Nous y voyons la condition sine qua non pour améliorer continuellement nos produits. **N'hésitez donc pas à nous faire part de vos remarques par e-mail, sur Facebook, sur YouTube, sur notre blog ou encore par téléphone.**

Bonne lecture !

Votre équipe **Cameo® Light**

LED MOVING HEADS	04
LED SCANNERS	10
LED STANDARD PAR CANS	14
LED FLAT PAR CANS	30
LED STUDIO PAR CANS	32
COB LED STUDIO PAR CANS	42
LED OUTDOOR PAR CANS	44
LED SETS	46
LED BAR	52
COB LED STROBES	54
LED LIGHT EFFECTS	58
DMX CONTROLLERS	60



www.cameolight.com

<http://www.facebook.com/cameolightandsound>
<http://www.youtube.com/cameolightandsound>



MOVING HEAD 25 W LED MOVING HEAD RGB 25 W

The Cameo CLMHRGB25W is a compact lightweight moving head with a high-efficiency, low power consumption 25-Watt white LED featuring XLR connectors for DMX input and output, an IEC power socket and fan cooling. Seven 21 mm gobos plus an open spot, a range of 8 vivid colours + white and the 540° pan and 270° tilt capability provide a rich palette of lighting options augmented by dimmer, shutter and high pulse rate strobe functions. Besides 6 and 11-channel DMX control the CLMHRGB25W can also be operated as a standalone including auto run and sound activation modes.

Model Name:	CLMHRGB25W
Product Type:	LED Moving Light
Type:	Moving Head
Colour Range:	8-Channel Multi Colour + white
Number of LEDs:	1
LED Type:	25W
Number of Gobos:	7 + open
Gobo Size:	21 mm
DMX Input:	XLR 3-pole
DMX Output:	XLR 3-pole
DMX Mode:	6/11-Channel
DMX Functions:	PAN, TILT, Colour Wheel, Gobo Wheel, Shutter, Dimmer, Program
PAN Movement:	within 540°
TILT Movement:	within 270°
High Speed Strobe:	> 30 Hz
Standalone Modes:	Auto Run, Sound Control, Show
Controls:	Mode, Enter, Value Up, Value Down
Indicators:	LED Display
Power Supply:	230 V AC
Power Consumption:	100W
Power Connector:	IECC Euro Power Socket male
Housing Material:	ABS / Metal
Housing Colour:	Black
Type of Cooling:	Fan
Illuminance (lx @ 1m):	8000 lx
Dimensions (without mounting bracket):	230 x 275 x 320 mm

- ▶ 25 W Ultra High Power CREE LED
- ▶ 8 brilliant colours
- ▶ 7 different gobos
- ▶ Fast 540° pan and 270° tilt capability
- ▶ Operated via DMX, in master/slave mode or standalone mode
- ▶ Integrated microphone for sound control
- ▶ Simple to operate using the four buttons and LED display



RRP 478,-€*

WATCH THE DEMO-VIDEO:





MOVING HEAD 60 W LED MOVING HEAD RGB 60 W

The Cameo CLMHRGB60W is a moving head powered by an energy-efficient ultra high luminosity 60-Watt white LED. It allows for DMX control in 8 and 13-channel modes and standalone operation with automated programs and sound activation to the beat of the music. An LED display and Mode, Enter, Value Up and Value Down keys provide easy manual control. The unit features seven 21 mm gobos plus an open spot and 9 deeply saturated colours. With 540° pan and 270° tilt capabilities and dimmer, shutter, focus control, prism and high speed strobe functions the CLMHRGB60W is a versatile tool for creative lighting design and stunning effects.

Model Name:	CLMHRGB60W
Product Type:	LED Moving Light
Type:	Moving Head
Colour Range:	8 Channel Multi Colour + white
Number of LEDs:	1
LED Type:	60W
Number of Gobos:	7 + open
Gobo Size:	21 mm
DMX Input:	XLR 3-pole
DMX Output:	XLR 3-pole
DMX Mode:	8/13-channel
DMX Functions:	PAN, TILT, Colour Wheel, Gobo Wheel, Shutter, Dimmer, Program, focus control, prism
PAN Movement:	within 540°
TILT Movement:	within 270°
High Speed Strobe:	> 30 Hz
Standalone Modes:	Auto Run, Sound Control, Show
Controls:	Mode, Enter, Value Up, Value Down
Indicators:	LED Display
Power Supply:	230 V AC
Power Consumption:	100W
Power Connector:	IECC Euro Power Socket male
Housing Material:	ABS/Metal
Housing Colour:	Black
Type of Cooling:	Fan
Illuminance (lx @ 1m):	40000 lx
Dimensions (without mounting bracket):	230 x 275 x 320 mm

- ▶ 60W Ultra High Power CREE LED
- ▶ 8 brilliant colours
- ▶ 7 different gobos
- ▶ Fast 540° pan and 270° tilt capability
- ▶ Operated via DMX, in master/slave mode or standalone mode
- ▶ Integrated microphone for sound control
- ▶ Simple to operate using the four buttons and LED display



RRP 758,-€*

WATCH THE DEMO-VIDEO:





- ▶ 25W Ultra High Power CREE LED
- ▶ 8 brilliant colours
- ▶ 11 different gobos
- ▶ Operated via DMX, in master/slave mode or standalone mode
- ▶ Integrated microphone for sound control
- ▶ Simple to operate using the four buttons and LED display
- ▶ Universal mounting bracket included
- ▶ Compact, sturdy metal housing



RRP 242,-€*

WATCH THE DEMO-VIDEO:



GOBO SCANNER 25 W

LED GOBO SCANNER LIGHTING 25 W

An ultra-bright 25-Watt LED engine, a colour wheel with eight dichroic colours and a gobo wheel with eleven gobos these are the key features of the CLSCAN25. With a pan of 180 degrees and a tilt of 90 degrees, the sharply focused light beam in this compact scanner effortlessly reaches every corner of the room. Although the power consumption is a mere 50 Watts, the CLSCAN25 makes a real impression with its high output and brilliant colours. It is actuated either via DMX protocol (3-pole XLR) with seven control channels, in master/slave mode or in standalone mode via the sound control. The CLSCAN25 is operated using four push buttons and an LED display in the scanner head.

Model Name:	CLSCAN25W
Product Type:	LED Moving Light
Type:	Scanner
Colour Range:	8-channel Multi Colour
Number of LEDs:	1
LED Type:	25 W
Number of Gobos:	11 + open
DMX Input:	XLR 3-pole
DMX Output:	XLR 3-pole
DMX Mode:	7-channel
DMX Functions:	PAN, TILT, Colour Wheel, Gobo Wheel, Shutter, Dimmer, Program
PAN Movement:	within 180°
TILT Movement:	within 90°
Standalone Modes:	Auto Run, Sound Control
Controls:	Mode, Enter, Value Up, Value Down
Indicators:	LED Display
Power Supply:	110 V AC - 240 V AC
Power Consumption:	50 W
Power Connector:	IECC Euro Power Socket male
Housing Material:	Metal
Housing Colour:	Black
Type of Cooling:	Fan
Illuminance (lx @ 1m):	4 000 lx
Dimensions (without mounting bracket):	204 x 150 x 465 mm



GOBO SCANNER 60 W

LED GOBO SCANNER LIGHTING 60 W

The Cameo CLSCAN60W is a feature-packed LED scanner with rotatable prism and motorized focus for crisp and detailed gobo projection. It uses a powerful 60-Watt white LED by industry leader Cree for intense luminosity, long life and low power consumption. The CLSCAN60W is capable of 10-channel mode DMX, master, slave and standalone operation including automated programs and sound activation to the beat of the music. With a selection of 9 saturated colours, 7 gobos plus open spot, 180° pan and 90° tilt the Cameo CLSCAN60W allows for highly flexible lighting design and prism effects enhanced by the high speed strobe, dimming and shutter functions.

Model Name:	CLSCAN60W
Product Type:	LED Moving Light
Type:	Scanner
Colour Range:	8 Channel Multi Colour + white
Number of LEDs:	1
LED Type:	60 W
Number of Gobos:	7 + open
DMX Input:	XLR 3-pole
DMX Output:	XLR 3-pole
DMX Mode:	10-channel
DMX Functions:	PAN, TILT, Colour Wheel, Gobo Wheel, Shutter, Dimmer, Program, Focus control, Prism
PAN Movement:	within 180°
TILT Movement:	within 90°
High Speed Strobe:	>30 Hz
Standalone Modes:	Auto Run, Sound Control
Controls:	Mode, Enter, Value Up, Value Down
Indicators:	LED Display
Power Supply:	230 V AC
Power Consumption:	90 W
Power Connector:	IECC Euro Power Socket male
Housing Material:	Metal
Housing Colour:	Black
Type of Cooling:	Fan
Illuminance (lx @ 1m):	26000 lx
Dimensions (without mounting bracket):	204 x 150 x 465 mm

- ▶ 60 W Ultra High Power CREE LED
- ▶ 8 brilliant colours
- ▶ 7 different gobos
- ▶ Operated via DMX, in master/slave mode or standalone mode
- ▶ Integrated microphone for sound control
- ▶ Simple to operate using the four buttons and LED display
- ▶ Universal mounting bracket included
- ▶ Compact, sturdy metal housing



RRP 598.-€*

WATCH THE DEMO-VIDEO:





PAR 64 CAN Q 8W

18 X 8W **QUAD COLOUR LED PAR CAN** RGBW
IN POLISHED OR BLACK HOUSING

An extremely powerful LED-PAR in a black or polished housing. The Cameo CLP64Q8WBS/PS has a total of 18 quad LEDs (RGBW) and thus guarantees perfect mixing of solid and pastel colours – including white. With a power consumption of just 170 Watts, the 8-Watt Quad LEDs produce an impressive level of brightness with a beam angle of 25 degrees. It is quick and easy to operate using four buttons and an LED display on the back. The CLP64Q8WBS/PS is equipped with a super-quiet fan for cooling. The dual bracket permits simple use as a floor PAR. There are three operating modes. In addition to DMX operation with 2, 3, 4 or 7 channels, this LED PAR can also be operated in standalone mode or via sound control. It features an integrated microphone.

- ▶ 18 x 8 W Ultra High Power QUAD RGBW LEDs
- ▶ RGBW for perfect mixing of solid and pastel colours
- ▶ Operated via DMX, in master/slave mode or standalone mode
- ▶ Integrated microphone for sound control
- ▶ Simple to operate using the four buttons and LED display
- ▶ Double brackets included as standard
- ▶ Rugged compact aluminum housing



RRP **338,-€***

WATCH THE DEMO-VIDEO:



Model Name:	CLP64Q8WPS (polished housing) / CLP64Q8WBS (black housing)
Product Type:	LED Par Can
Type:	PAR 64
Colour Range:	RGBW
Number of LEDs:	18
LED Type:	8 W QUAD Colour
Beam Angle:	25°
DMX Input:	XLR 3-pole male
DMX Output:	XLR 3-pole female
DMX Mode:	2/3/4/7-channel selectable
DMX Functions:	RGBW, Master Dimmer, Strobe, Sound Control, Colour Jump, Colour Fade
Standalone Modes:	Static Colour, Colour Fading, Colour Jump, Sound Control, Slave
Controls:	Enter, Mode, Value Up, Value Down
Indicators:	LED Display
Power Connector:	Schuko
Housing Material:	Aluminium
Housing Colour:	Polished/Black
Type of cooling:	Fan
Illuminance (lx @ 1m):	20.900 lx
Dimensions (without mounting bracket):	260 x 270 x 305 mm



- ▶ 18 x 3 W High Power TRI RGB LEDs
- ▶ Low power consumption
- ▶ Operated via DMX, in master/slave mode or standalone mode
- ▶ Integrated microphone for sound control
- ▶ Simple to operate using the four buttons and LED display
- ▶ Double brackets included as standard
- ▶ Rugged compact aluminum housing



RRP 218-€*

WATCH THE DEMO-VIDEO:

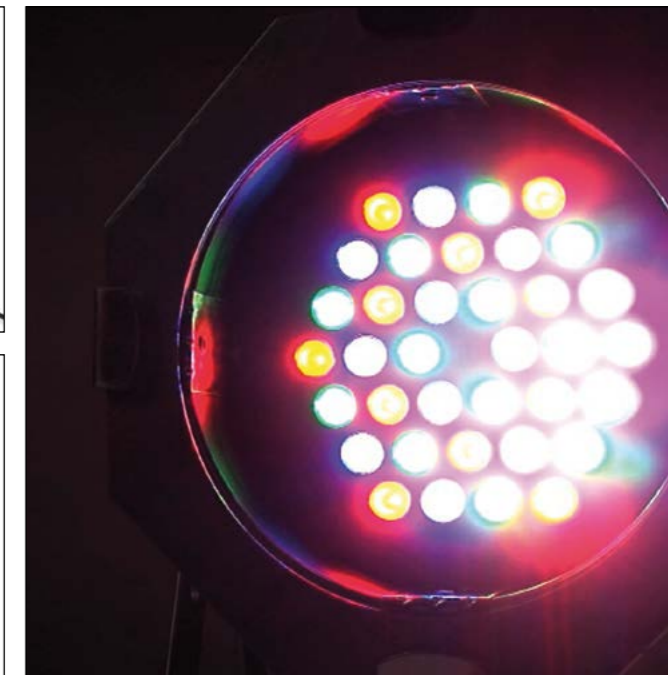


PAR 64 CAN TRI 3W

18 X 3W TRI COLOUR LED PAR CAN RGB IN POLISHED OR BLACK HOUSING

Ultra-high performance LED PAR 64 with 18 ultra-bright 3-Watt TRI colour LEDs in a black or polished housing. This high-performance LED PAR has a beam angle of 25 degrees and a power consumption of just 60 Watts. Like all new LED PAR cans, the CLP64TRI3WBS/PS features a sturdy housing. The double bracket makes this PAR can the ideal lamp for use as a floor PAR or for mounting to cross-beams and bars. It is actuated either via the DMX protocol (3-pole XLR) with six control channels, in master/slave mode or standalone mode (sound control, colour change, static colours). It features an integrated microphone and is quick and easy to operate using four buttons and an LED display.

Model Name:	CLP64TRI3WPS (polished housing) CLP64TRI3WBS (black housing)
Product Type:	LED Par Can
Type:	PAR 64
Colour Range:	RGB
Number of LEDs:	18
LED Type:	3W TRI Colour
Beam Angle:	25°
DMX Input:	XLR 3-pole
DMX Output:	XLR 3-pole
DMX Mode:	6-channel
DMX Functions:	RGB, Master Dimmer, Strobe, Sound Control, Colour Jump, Colour Fade
Standalone Modes:	Static Colour, Colour Change, Colour Fading, Sound Control, Slave
Controls:	Mode, Enter, Value Up, Value Down
Indicators:	LED Display
Power Connector:	Schuko
Housing Material:	Aluminium
Housing Colour:	Polished/Black
Type of cooling:	Fan
Illuminance (lx @ 1m):	11.300 lx
Dimensions (without mounting bracket):	260 x 280 x 300 mm



PAR 64 CAN RGB 3W

36 X 3W **LED PAR CAN** RGB IN POLISHED OR BLACK HOUSING

Extremely high-powered LED PAR in a black, short housing. Equipped with dual brackets and a filter frame holder. The Cameo CLP64RGB3WBS/PS has a total of 36 ultra-bright 3-Watt LEDs (12 x red, 12 x green, 12 x blue) – for perfect colour mixing and rich solid colours. The beam angle is 30 degrees. It is operated using three buttons and an LED display on the back. The CLP64RGB3WBS/PS is equipped with a super-quiet fan for cooling. There are three operating modes. In addition to DMX operation with 2, 3, 4 or 6 channels, this LED PAR can also be operated in standalone mode or via sound control. It has a built-in microphone. The CLP64RGB3WBS/PS has a power consumption of just 150 watts, runs on mains voltages of 100 to 250 volts, and thus can be used universally and worldwide.

- ▶ 36 x 3 W Ultra High Power RGB LEDs
- ▶ Low power consumption
- ▶ Operated via DMX, in master/slave mode or standalone mode
- ▶ Integrated microphone for sound control
- ▶ Simple to operate using the three buttons and LED display
- ▶ Double brackets included as standard
- ▶ Rugged compact aluminum housing

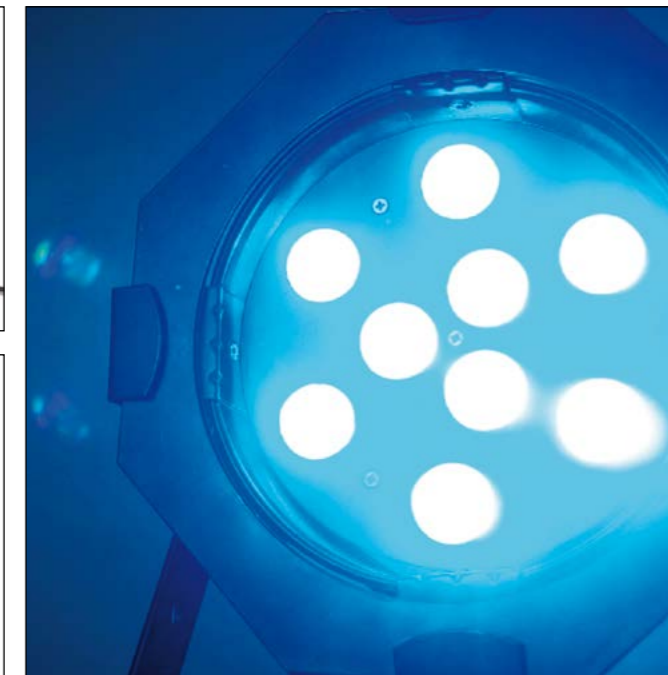


RRP **198,-€***

WATCH THE DEMO-VIDEO:



Model Name:	CLP64RGB3WPS (polished housing) / CLP64RGB3WBS (black housing)
Product Type:	LED Par Can
Type:	PAR 64
Colour Range:	RGB
Number of LEDs:	36
LED Type:	3 W
Beam Angle:	30°
DMX Input:	XLR 3-pole male
DMX Output:	XLR 3-pole female
DMX Mode:	4 / 6-channel selectable
DMX Functions:	RGB, Master Dimmer, Strobe, Sound Control, Colour Jump, Colour Fade
Standalone Modes:	Static Colour, Colour Fading, Colour Jump, Sound Control, Slave
Controls:	Mode, Value Up, Value Down
Indicators:	LED Display
Power Connector:	Schuko
Housing Material:	Aluminium
Housing Colour:	Polished / Black
Type of cooling:	Fan
Illuminance (lx @ 1m):	19.500 lx
Dimensions (without mounting bracket):	260 x 270 x 305 mm



PAR 56 CAN TRI RGB 3W

9 X 3 W **TRI COLOUR LED PAR CAN** RGB
IN POLISHED OR BLACK HOUSING

Ultra-high performance LED PAR 56 with 9 extremely bright 3-Watt TRI colour LEDs in a black or polished housing. This high-performance LED PAR has a beam angle of 25 degrees and a power consumption of just 40 Watts. Like all new LED PAR cans, the CLP56TRI3WBS/PS features a sturdy housing. The double bracket makes this PAR can the ideal lamp for use as a floor PAR or for mounting to cross-beams and bars. It is actuated either via the DMX protocol (3-pole XLR) with six control channels, in master/slave or standalone mode (sound control, colour change, solid colours). It features an integrated microphone and is quick and easy to operate using four buttons and an LED display.

- ▶ 9 x 3 W High Power RGB TRI LEDs
- ▶ Low power consumption
- ▶ Operated via DMX, in master/slave mode or standalone mode
- ▶ Integrated microphone for sound control
- ▶ Simple to operate using the four buttons and LED display
- ▶ Double brackets included as standard
- ▶ Rugged compact aluminum housing

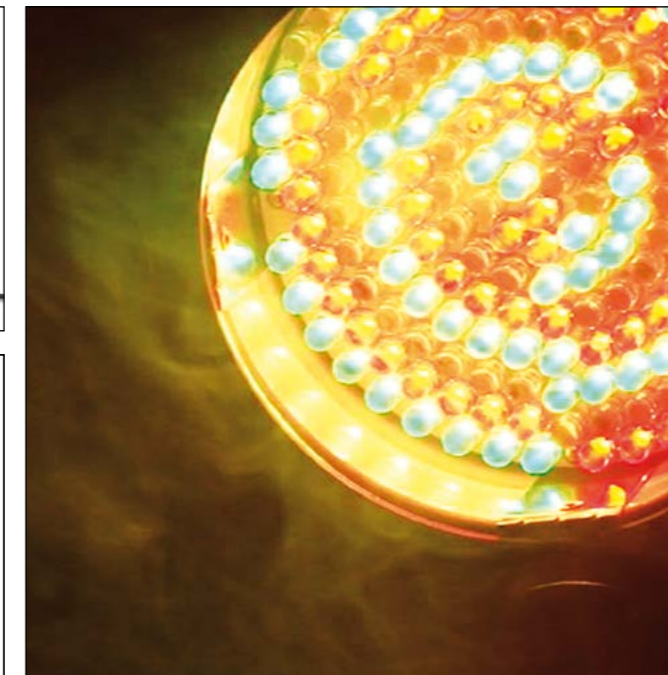
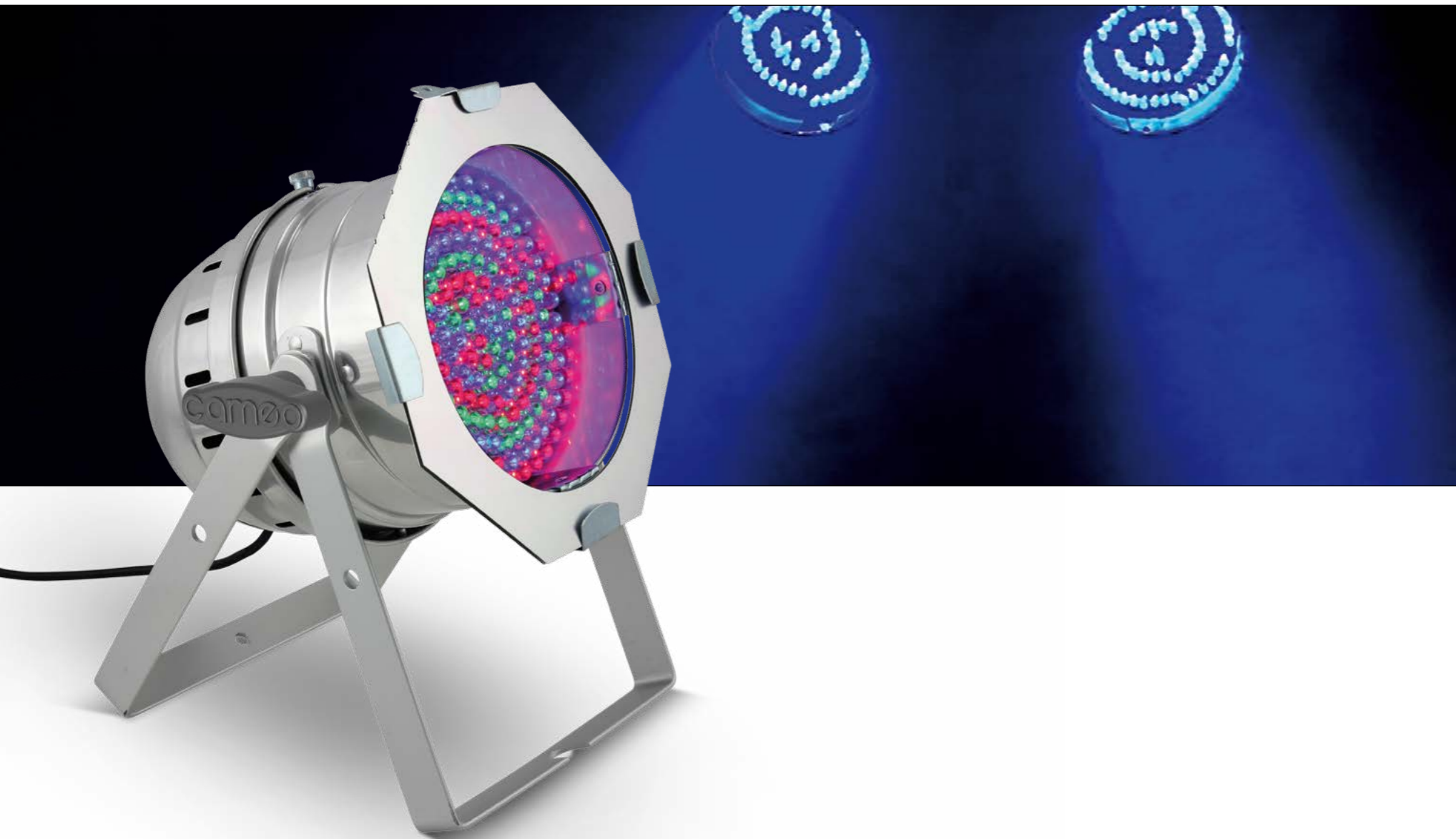


RRP **154,-€***

WATCH THE DEMO-VIDEO:



Model Name:	CLP56TRI3WPS (polishes housing) / CLP56TRI3WBS (black housing)
Product Type:	LED Par Can
Type:	PAR 56
Colour Range:	RGB
Number of LEDs:	9
LED Type:	3 W TRI Colour
Beam Angle:	25°
DMX Input:	XLR 3-pole
DMX Output:	XLR 3-pole
DMX Mode:	6-channel
DMX Functions:	RGB, Master Dimmer, Strobe, Colour Jump, Colour Fade
Standalone Modes:	Static Colour, Colour Change, Colour Fading, Sound Control, Slave
Controls:	Mode, Enter, Value Up, Value Down
Indicators:	LED Display
Power Connector:	Schuko
Housing Material:	Aluminium
Housing Colour:	Polished / Black
Type of cooling:	Convection
Illuminance (lx @ 1m):	7400 lx
Dimensions (without mounting bracket):	230 x 250 x 260 mm



PAR 64 CAN RGBWA 10

177 X 10 MM **LED PAR CAN** RGBWA IN POLISHED OR BLACK HOUSING

The Cameo CLP64RGBWA10BS/PS is a professional PAR 64 spotlight in a traditional aluminium housing with 177 bright, long-lasting 10mm LEDs in the colours red, green, blue, and amber (RGBWA system). Two adjustable brackets with knurled locking screws permit use as a floor spot and mounting on traverses, walls, and ceilings. The beam angle is 25°. The CLP64RGBWA10BS/PS can be controlled in 7-channel DMX mode or in standalone mode, in each case with six functions. It is operated using buttons for mode, enter, up, and down. A 4-position LED display indicates the corresponding setting. XLR sockets serve as DMX in- and outputs for controlling several spotlights in series. Additional advantages are a low power consumption of just 30-Watt and minimal generation of heat. The spotlight is available in black or polished.

- ▶ Powerful 177 x 10 mm RGBWA LEDs
- ▶ RGBWA for warm, rich colour mixing
- ▶ Operated via DMX, in master/slave mode or standalone mode
- ▶ Integrated microphone for sound control
- ▶ Simple to operate using the four buttons and LED display
- ▶ Double brackets included as standard
- ▶ Rugged compact aluminum housing

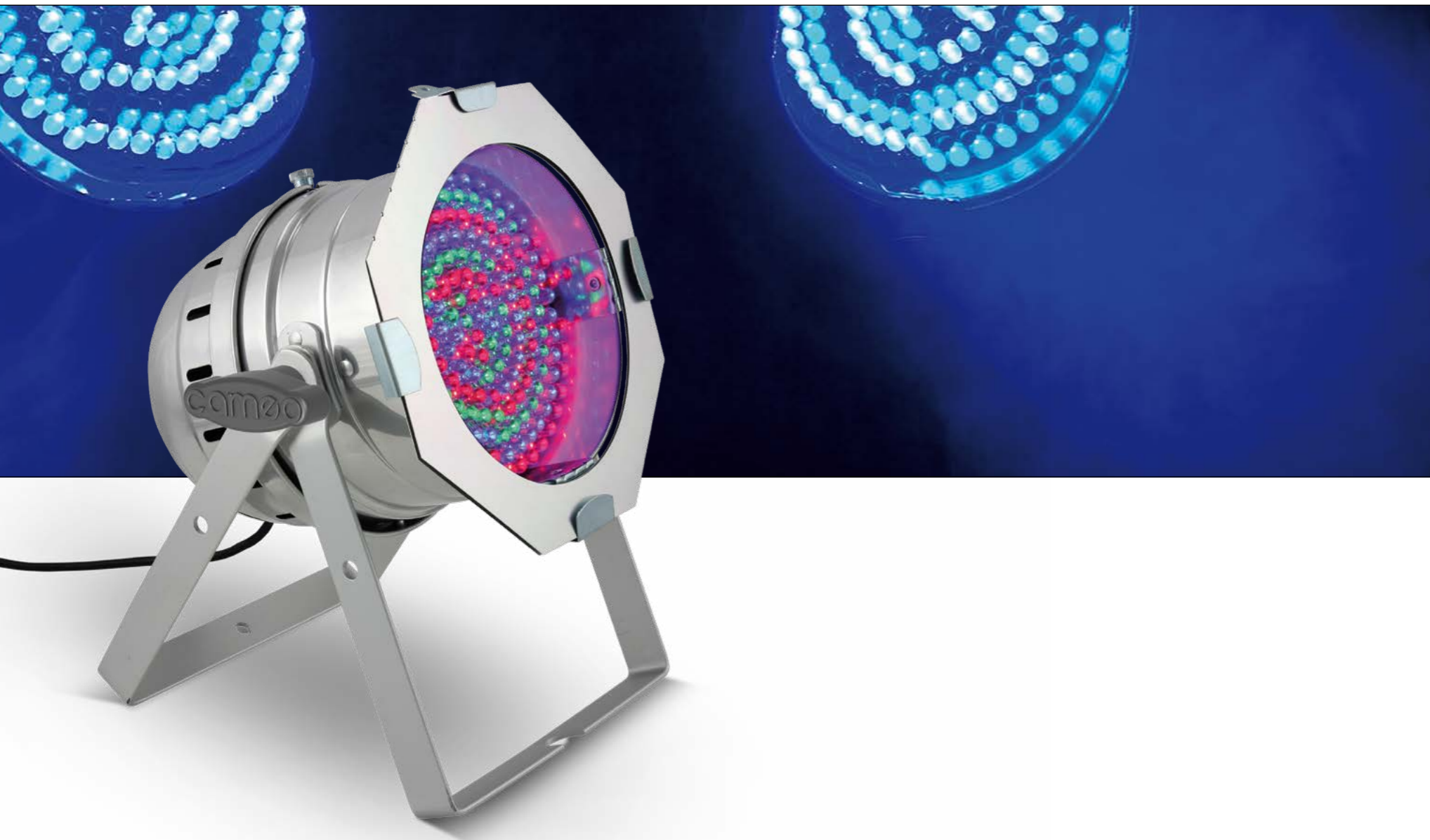


RRP 102,-€*

WATCH THE DEMO-VIDEO:



Model Name:	CLP64RGBWA10PS (polished housing) / CLP64RGBWA10BS (black housing)
Product Type:	LED Par Can
Type:	PAR 64
Colour Range:	RGBWA
Number of LEDs:	177
LED Type:	10 mm
Beam Angle:	25°
DMX Input:	XLR 3-pole male
DMX Output:	XLR 3-pole female
DMX Mode:	7-channel
DMX Functions:	RGBWA, Master Dimmer, Strobe, Colour Jump, Colour Fade
Standalone Modes:	Static Colour, Colour Change, Colour Fading, Sound Control, Slave Mode
Controls:	Mode, Enter, Value Up, Value Down
Indicators:	LED Display
Power Connector:	Schuko
Housing Material:	Aluminium
Housing Colour:	Polished / Black
Type of cooling:	Convection
Illuminance (lx @ 1m):	2600 lx
Dimensions (without mounting bracket):	265 x 270 x 280 mm



PAR 64 CAN RGB 10

183 X 10 MM LED PAR CAN RGB IN POLISHED OR BLACK HOUSING

Professional PAR can with 183 ultra-bright 10-mm LEDs in the RGB colour system (60 x red, 60 x green, 63 x blue) in a conventional sturdy aluminium housing and with a beam angle of 25 degrees. Featuring a double bracket, the CLP64RGB10BS/PS PAR is suitable for use both as a floor PAR and for mounting to cross-beams and bars. Actuation is either via the DMX protocol (3-pole XLR) with four or six control channels, in master/slave mode or standalone mode (sound control, colour change, solid colours). It is controlled by three buttons and an LED display. Its power consumption is a mere 30 Watts.

- ▶ Powerful 183 x 10 mm RGB LEDs
- ▶ Low power consumption
- ▶ Operated via DMX, in master/slave mode or standalone mode
- ▶ Integrated microphone for sound control
- ▶ Simple to operate using the three buttons and LED display
- ▶ Double brackets included as standard
- ▶ Rugged compact aluminum housing



RRP 89,-€*

WATCH THE DEMO-VIDEO:



Model Name:	CLP64RGB10PS (polished housing) / CLP64RGB10BS (black housing)
Product Type:	LED Par Can
Type:	PAR 64
Colour Range:	RGB
Number of LEDs:	183
LED Type:	10 mm
Beam Angle:	25°
DMX Input:	XLR 3-pole
DMX Output:	XLR 3-pole
DMX Mode:	4 / 6-channel selectable
DMX Functions:	RGB, Master Dimmer, Strobe, Sound Control, Colour Jump, Colour Fade
Standalone Modes:	Static Colour, Colour Change, Colour Fading, Sound Control, Slave
Controls:	Mode, Value Up, Value Down
Indicators:	LED Display
Power Connector:	Schuko
Housing Material:	Aluminium
Housing Colour:	Polished / Black
Type of cooling:	Convection
Illuminance (lx @ 1m):	2050 lx
Dimensions (without mounting bracket):	265 x 270 x 280 mm



PAR 56 CAN RGB 10 MM

108 X 10 MM LED PAR CAN RGB IN POLISHED OR BLACK HOUSING

Professional PAR can with 108 ultra-bright LEDs (36 x red, 36 x green, 36 x blue) and RGB colour system in a sturdy aluminium housing and a beam angle of 25 degrees. Featuring a double bracket, the CLP56RGB10PS/BS is suitable for use both as a floor PAR and for mounting to cross-beams and bars. It is actuated either via DMX protocol (3-pole XLR) with three and six control channels, in master/slave mode or in standalone mode (sound control, colour change, solid colours). It is controlled by three buttons and an LED display. The power consumption of the CLP56RGB10PS/BS is a mere 20 Watts.

- ▶ 108 powerful 10mm RGB LEDs
- ▶ Low power consumption
- ▶ Operated via DMX, in master/slave mode or standalone mode
- ▶ Integrated microphone for sound control
- ▶ Simple to operate using the three buttons and LED display
- ▶ Double brackets included as standard
- ▶ Rugged compact aluminum housing

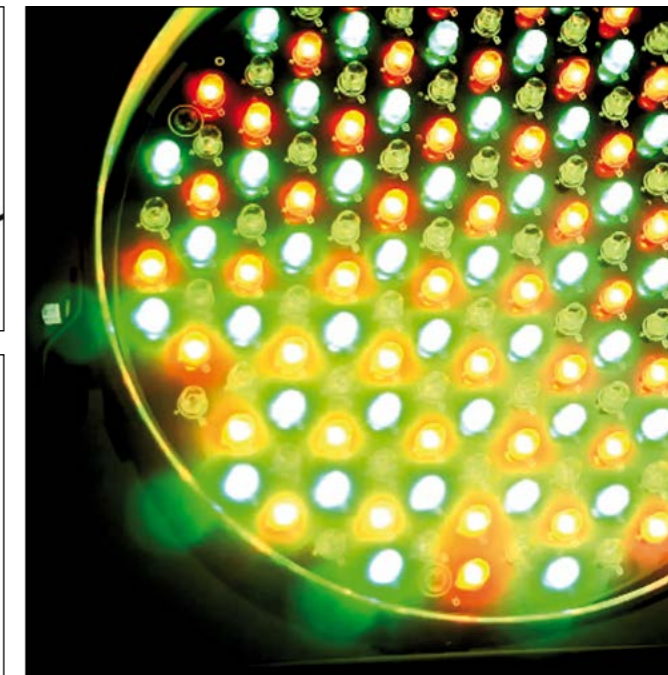
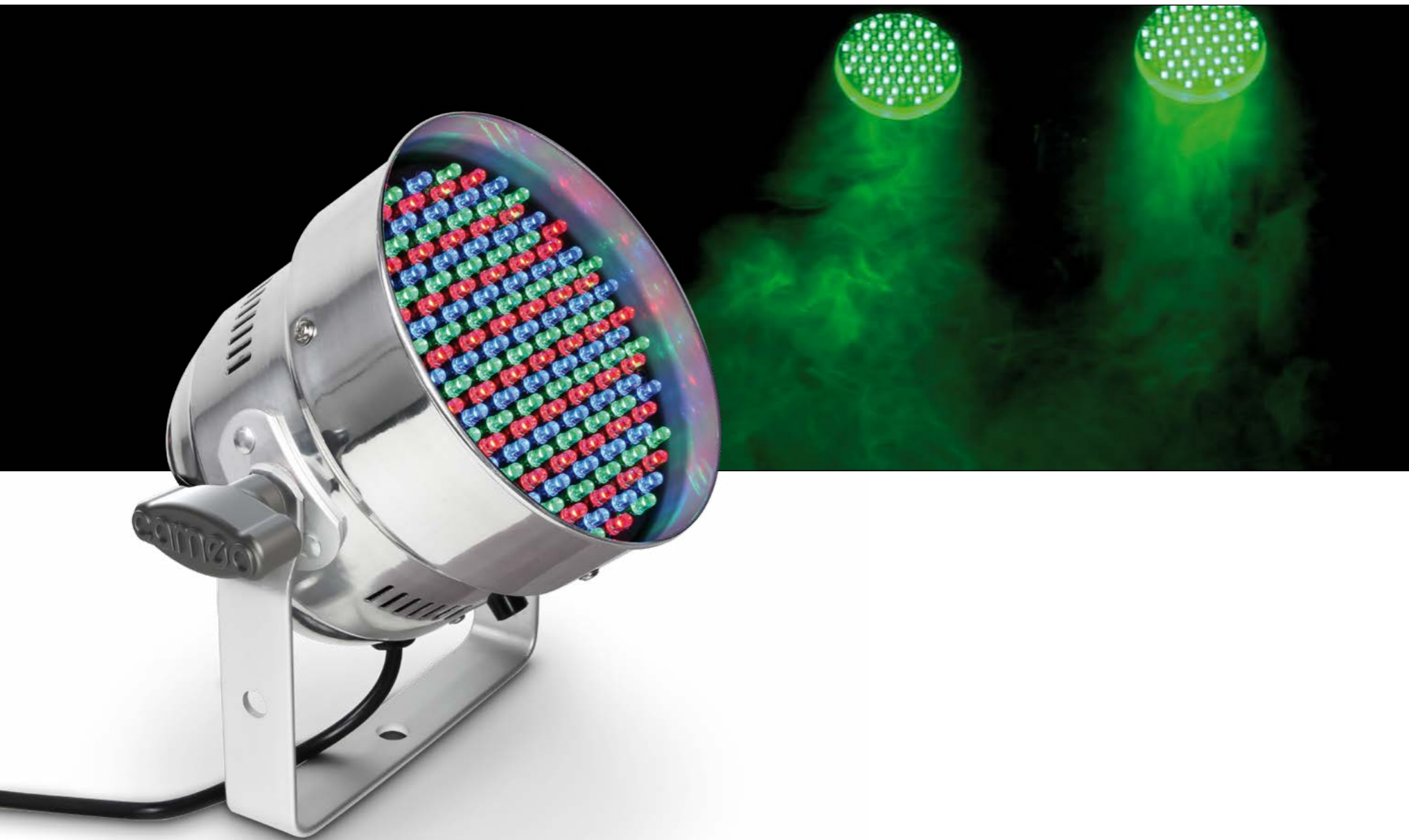


RRP 76,-€*

WATCH THE DEMO-VIDEO:



Model Name:	CLP56RGB10PS (polished housing) / CLP56RGB10BS (black housing)
Product Type:	LED Par Can
Type:	PAR 56
Colour Range:	RGB
Number of LEDs:	108
LED Type:	10 mm
Beam Angle:	25°
DMX Input:	XLR 3-pole
DMX Output:	XLR 3-pole
DMX Mode:	4 / 6-channel selectable
DMX Functions:	RGB, Master Dimmer, Strobe, Sound Control, Colour Jump, Colour Fade
Standalone Modes:	Static Colour, Colour Change, Colour Fading, Sound Control, Slave
Controls:	Mode, Value Up, Value Down
Indicators:	LED Display
Power Connector:	Schuko
Housing Material:	Aluminium
Housing Colour:	Polished / Black
Type of cooling:	Convection
Illuminance (lx @ 1m):	1220 lx
Dimensions (without mounting bracket):	230 x 250 x 260 mm



PAR 56 CAN RGB 5MM

151 X 5 MM LED PAR CAN RGB IN POLISHED OR BLACK HOUSING

The CLP56RGB05PS/BS is a traditional PAR 56 can that's high-tech on the inside. 151 ultra-bright LEDs (51 x red, 49 x green, 51 x blue) create an optimal colour mix and awe-inspiring lighting. The CLP56RGB05PS/BS has a beam angle of 25 degrees and at just 23-Watt, its power consumption is at least ten times lower than that of conventional PAR cans. The CLP56RGB05PS/BS has three operating modes DMX (with four or six control channels), standalone (steady light, colour gradient) or music-controlled (via an integrated microphone). All settings can be configured quickly and easily using the three buttons and the LED on the back.

- ▶ 151 powerful RGB LEDs
- ▶ Low power consumption
- ▶ Operated via DMX, in master/slave mode or standalone mode
- ▶ Integrated microphone for sound control
- ▶ Simple to operate using the three buttons and LED display
- ▶ Rugged compact aluminum housing

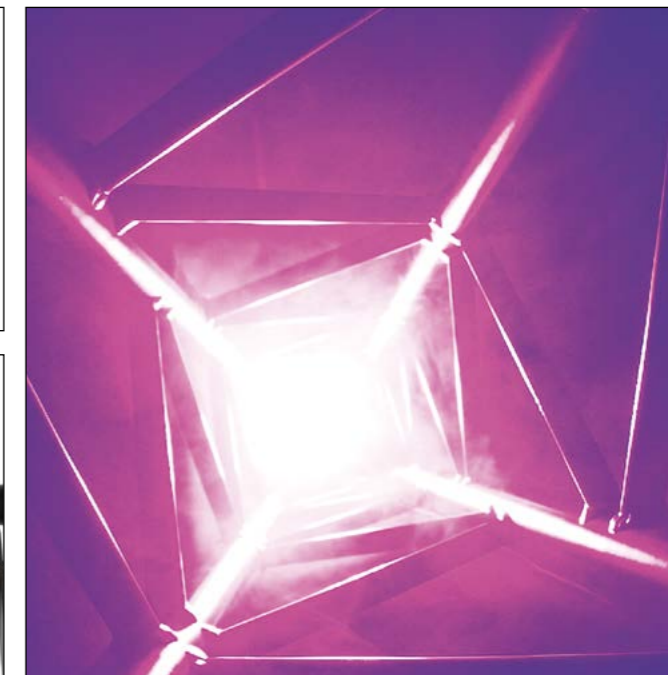


RRP 62,-€*

WATCH THE DEMO-VIDEO:



Model Name:	CLP56RGB05PS (polished housing) / CLP56RGB05BS (black housing)
Product Type:	LED Par Can
Type:	PAR 56
Colour Range:	RGB
Number of LEDs:	151
LED Type:	5 mm
Beam Angle:	25°
DMX Input:	XLR 3-pole
DMX Output:	XLR 3-pole
DMX Mode:	4 / 6-channel selectable
DMX Functions:	RGB, Master Dimmer, Strobe, Sound Control, Colour Jump, Colour Fade
Standalone Modes:	Static Colour, Colour Change, Colour Fading, Sound Control, Slave
Controls:	Mode, Value Up, Value Down
Indicators:	LED Display
Power Connector:	Schuko
Housing Material:	Aluminium
Housing Colour:	Polished / Black
Type of cooling:	Convection
Illuminance (lx @ 1m):	900 lx
Dimensions (without mounting bracket):	170 x 170 x 169 mm



FLAT PAR CAN TRI 3W

7 X 3 W TRI COLOUR LED PAR CAN RGB IN BLACK HOUSING

The CLPFLAT1TRI3W by Cameo is an especially flat, bright PAR spotlight with seven ultra-high-performance 3 W TRI-LEDs that cover the RGB spectrum. The light and compact ABS design with a dual bracket and 30° beam angle is suitable for flexible and silent use; thanks to extremely low heat build-up, no fan is required. The CLPFLAT1TRI3W can be operated with DMX control or in standalone mode with all essential functions and can be controlled using a display and buttons for menu, enter, up, and down. The supported DMX modes include 2-channel, 3-channel-1, 3-channel-2, and 6-channel; external sound control is also possible. XLR sockets serve as DMX input and output for connection in series. The Cameo CLPFLAT1TRI3W has an IEC power connector with built-in fuse holder for connection to mains power and an IEC output. The spotlight is available in black.

Model Name:	CLPFLAT1TRI3W
Product Type:	LED Par Can
Type:	Flat PAR
Colour Range:	RGB
Number of LEDs:	7
LED Type:	3 W TRI Colour
Beam Angle:	30°
DMX Input:	XLR 3-pole
DMX Output:	XLR 3-pole
DMX Mode:	2-channel, 3-channel 1, 3-channel 2, 6-channel
DMX Functions:	RGB, Master Dimmer, Strobe, Colour Jump, Colour Fade, Sound Control, Strobe
Standalone Modes:	Colour Jump, Colour Fade, Slave Mode, Sound Control, Static Colour
Controls:	Mode, Enter, Value Up, Value Down
Indicators:	LED Display
Power Connector:	IEC connector input/output
Housing Material:	ABS
Housing Colour:	Black
Type of cooling:	Convection
Illuminance (lx @ 1m):	4100 lx
Dimensions (without mounting bracket):	180 x 175 x 115 mm

- ▶ 7 x 3 W High Power TRI RGB LEDs
- ▶ Low power consumption
- ▶ Power in/out for daisy chaining up to 10 units
- ▶ Operated via DMX, in master/slave mode or standalone mode
- ▶ Integrated microphone for sound control
- ▶ Simple to operate using the four buttons and LED display
- ▶ Double brackets included as standard
- ▶ Flat and compact ABS housing



RRP 109,-€*

WATCH THE DEMO-VIDEO:





STUDIO PAR 64 CAN Q 8W

18 X 8 W QUAD COLOUR LED PAR CAN RGBW
IN BLACK HOUSING

Extremely high-powered LED studio PAR in a black short housing. Ruggedly made housing in studio look with built-in filter frame holder. The Cameo CLPST64Q8W has a total of 18 quad LEDs (RGBW), thus guaranteeing perfect mixing of solid and pastel colours – including white. With a power consumption of just 170 watts, the 8-Watt quad LEDs produce an impressive level of brightness with a beam angle of 25 degrees. It is operated using four buttons and an LED display on the back. The CLPST64Q8W is equipped with a super-quiet fan for cooling. There are three operating modes. In addition to DMX operation with 2, 3, 4 or 7-channels, this LED PAR can also be operated in standalone mode or via sound control. The CLPST64Q8W runs on mains voltages of 110 to 240 volts, so it can be used universally and worldwide.

Model Name:	CLPST64Q8W (black housing)
Product Type:	LED Par Can
Type:	Studio PAR 64
Colour Range:	RGBW
Number of LEDs:	18
LED Type:	8 W QUAD Colour
Beam Angle:	25°
DMX Input:	XLR 3-pole male
DMX Output:	XLR 3-pole female
DMX Mode:	2/3/4/7-channel selectable
DMX Functions:	RGBW, Master Dimmer, Strobe, Sound Control, Colour Jump, Colour Fade
Standalone Modes:	Static Colour, Colour Fading, Colour Jump, Sound Control, Slave
Controls:	Enter, Mode, Value Up, Value Down
Indicators:	LED Display
Power Connector:	Schuko
Housing Material:	Metal
Housing Colour:	Black
Type of cooling:	Fan
Illuminance (lx @ 1m):	14 500 lx
Dimensions (without mounting bracket):	230 x 220 x 255 mm

- ▶ 18 x 8 W Ultra High Power QUAD RGBW LEDs
- ▶ RGBW for perfect mixing of solid and pastel colours
- ▶ Operated via DMX, in master/slave mode or standalone mode
- ▶ Integrated microphone for sound control mode
- ▶ Simple to operate using the four buttons and LED display
- ▶ Double brackets included as standard
- ▶ Sturdy metal housing



RRP 378,-€*

WATCH THE DEMO-VIDEO:





STUDIO PAR 64 CAN TRI 3W

18 X 3W TRI COLOUR LED PAR CAN RGB
IN BLACK HOUSING

Professional Studio PAR with 18 ultra-bright 3-Watt TRI LEDs in a sturdy, black aluminium housing with a beam angle of 25 degrees. It is actuated either via the DMX protocol (3-pole XLR) with six control channels, in master/slave mode or standalone mode (sound control, colour change, solid colours). The CLPST64TRI3W is operated via four push buttons and an LED display. Its power consumption is a mere 60 Watts.

- ▶ 18 x 3 W High Power TRI RGB LEDs
- ▶ Low power consumption
- ▶ Operated via DMX, in master/slave mode or standalone mode
- ▶ Integrated microphone for sound control mode
- ▶ Simple to operate using the four buttons and LED display
- ▶ Sturdy metal housing

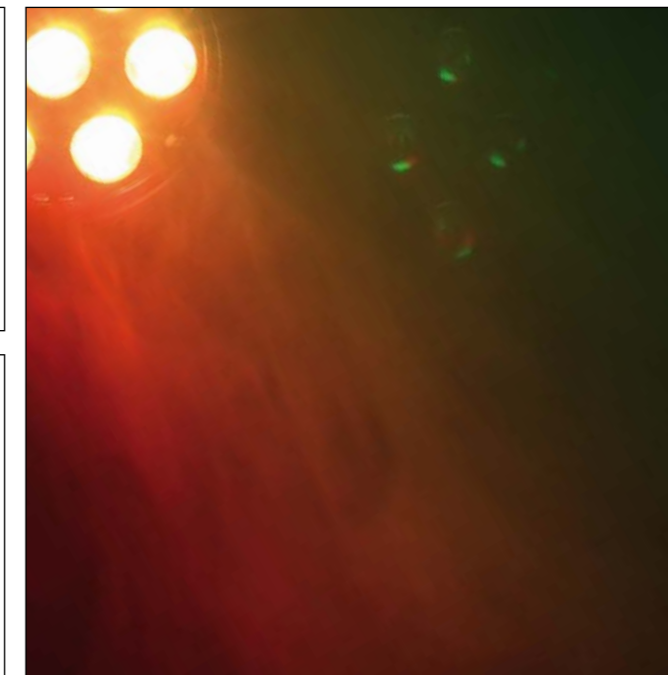


RRP 238,-€*

WATCH THE DEMO-VIDEO:



Model Name:	CLPST64TRI3W (black housing)
Product Type:	LED Par Can
Type:	Studio PAR 64
Colour Range:	RGB
Number of LEDs:	18
LED Type:	3 W TRI Colour
Beam Angle:	25°
DMX Input:	XLR 3-pole
DMX Output:	XLR 3-pole
DMX Mode:	6-channel
DMX Functions:	RGB, Master Dimmer, Strobe, Sound Control, Colour Jump, Colour Fade
Standalone Modes:	Static Colour, Colour Change, Colour Fading, Sound Control, Slave
Controls:	Mode, Enter, Value Up, Value Down
Indicators:	LED Display
Power Connector:	Schuko
Housing Material:	Metal
Housing Colour:	Black
Type of cooling:	Fan
Illuminance (lx @ 1m):	7650 lx
Dimensions (without mounting bracket):	230 x 220 x 260 mm



STUDIO MINI PAR CAN Q 8W

7 X 8 W QUAD COLOUR LED PAR CAN RGBW
IN BLACK OR WHITE HOUSING

Extremely powerful studio mini PAR with seven 8-watt QUAD COLOUR LEDs for optimal colour mixing and perfect white light. This studio LED PAR has a beam angle of 25 degrees and is controlled via five DMX modes. An LED display on the back and four buttons ensure simple and practical operation. Alternatively, the studio mini PAR can also be operated in standalone mode with a built-in microphone and sound control. Sturdy black or white housing with double bracket for use as a floor PAR or on stands or traverses. Maximum power consumption 60 watts.

- ▶ 7 x 8 W Ultra High Power QUAD RGBW LEDs
- ▶ RGBW for perfect mixing of solid and pastel colours
- ▶ Operated via DMX, in master/slave mode or standalone mode
- ▶ Integrated microphone for sound control mode
- ▶ Simple to operate using the four buttons and LED display
- ▶ Double brackets included as standard
- ▶ Compact, sturdy metal housing



RRP 218,-€*

WATCH THE DEMO-VIDEO:



Model Name:	CLPSTMINIQ8W (black housing) / CLPSTMINIQ8WWH (white housing)
Product Type:	LED Par Can
Type:	Studio Mini PAR
Colour Range:	RGBW
Number of LEDs:	7
LED Type:	8 W QUAD Colour
Beam Angle:	25°
DMX Input:	XLR 3-pole male
DMX Output:	XLR 3-pole female
DMX Mode:	2-channel, 3-channel 1, 3-channel 2, 4-channel, 7-channel
DMX Functions:	RGBW, Master Dimmer, Strobe, Colour Jump, Colour Fade
Standalone Modes:	Static Colour, Colour Change, Colour Fading, Sound Control, Slave
Controls:	Mode, Enter, Value Up, Value Down
Indicators:	LED Display
Power Connector:	Schuko
Housing Material:	Aluminium
Housing Colour:	Black / White
Type of cooling:	Fan
Illuminance (lx @ 1m):	6640 lx
Dimensions (without mounting bracket):	168 x 183 x 186 mm



STUDIO MINI PAR CAN Q 4W W

7 X 4 W COLD WHITE / WARM WHITE LED PAR CAN IN BLACK OR WHITE HOUSING

The Cameo CLPSTMINIQ4WW is a compact all-white studio PAR light. Featuring 7 powerful 4-watt 2-in-1 LEDs, the miniature fixture creates varying degrees of colour temperature and brightness from warm to cold white with a focused 35° coverage. The CLPSTMINIQ4WW allows for 2, 5 and 6-channel DMX modes and master, slave and standalone operation with a variety of functions, 17 temperature presets and infrared remote control capability. Mode, Enter, Value Up and Down keys and the clear LED display provide easy menu access. Available in black and white, the CLPSTMINIQ4WW incorporates adjustable twin brackets for truss, floor and other mounting options.

- ▶ 7 x 4 W High Power Cold White/Warm White LEDs
- ▶ 17 presets for different colour temperatures
- ▶ IR-Remote included
- ▶ Operated via DMX, in master/slave mode or standalone mode
- ▶ Integrated microphone for sound control mode
- ▶ Simple to operate using the four buttons and LED display
- ▶ Double brackets included as standard
- ▶ Compact, sturdy metal housing

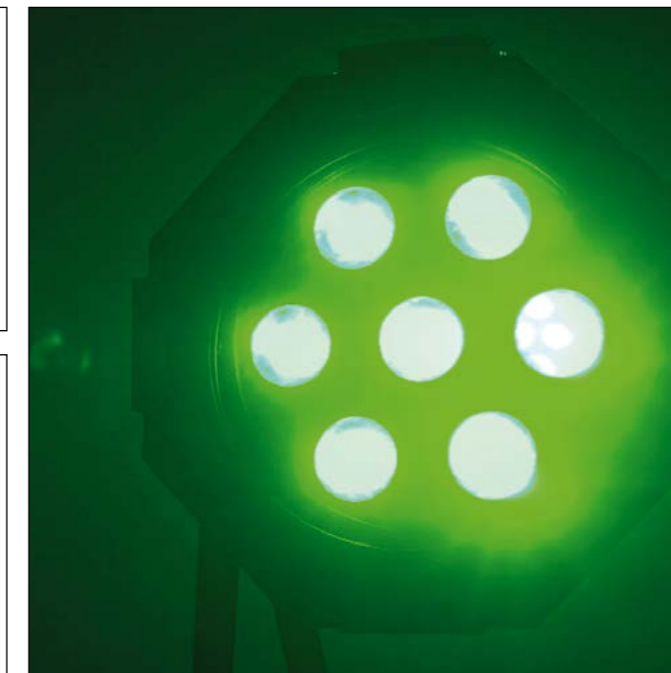


RRP 189,-€*

WATCH THE DEMO-VIDEO:



Model Name:	CLPSTMINIQ4WW (black housing) / CLPSTMINIQ4WWHH (white housing)
Product Type:	LED Par Can
Type:	Studio Mini PAR
Colour Range:	Cold White/Warm White
Number of LEDs:	7
LED Type:	4 W 2 in 1 LED
Beam Angle:	35°
DMX Input:	XLR 3-pole
DMX Output:	XLR 3-pole
DMX Mode:	2-channel, 5-channel, 6-channel
DMX Functions:	Master Dimmer, Cool White, Warm White, Strobe, Colour Temperature
Standalone Modes:	Slave, Static Colour Mode, Colour Temperature (17 Presets)
Controls:	Mode, Enter, Value Up, Value Down
Indicators:	LED Display
Power Connector:	Schuko
Housing Material:	Metal
Housing Colour:	Black / White
Type of cooling:	Fan
Illuminance (lx @ 1m):	2250 lx
Remote:	IR Remote
Dimensions (without mounting bracket):	168 x 186 x 186 mm



STUDIO MINI PAR CAN TRI 3W

7 X 3 W TRI COLOUR LED PAR CAN RGB IN BLACK OR WHITE HOUSING

Professional Mini-PAR in sturdy and compact black or white housing. The light is provided by seven ultra-bright 3-Watt TRI colour LEDs, and the beam angle is 25 degrees. Thanks to the colour mix in the LED itself, colours are added without coloured shadows or borders. The power consumption of the CLPSTMINITRI3W/WWH is a mere 30 Watts. The sturdy, compact housing features a double bracket for mounting to cross-beams and bars and for use as a floor PAR. It is actuated via DMX (6 channel) or in standalone mode. The CLPSTMINITRI3W/WWH has an integrated microphone for sound control.

- ▶ 7 x 3 W High Power TRI RGB LEDs
- ▶ Low power consumption
- ▶ Operated via DMX, in master/slave mode or standalone mode
- ▶ Integrated microphone for sound control mode
- ▶ Simple to operate using the four buttons and LED display
- ▶ Double brackets included as standard
- ▶ Compact, sturdy metal housing

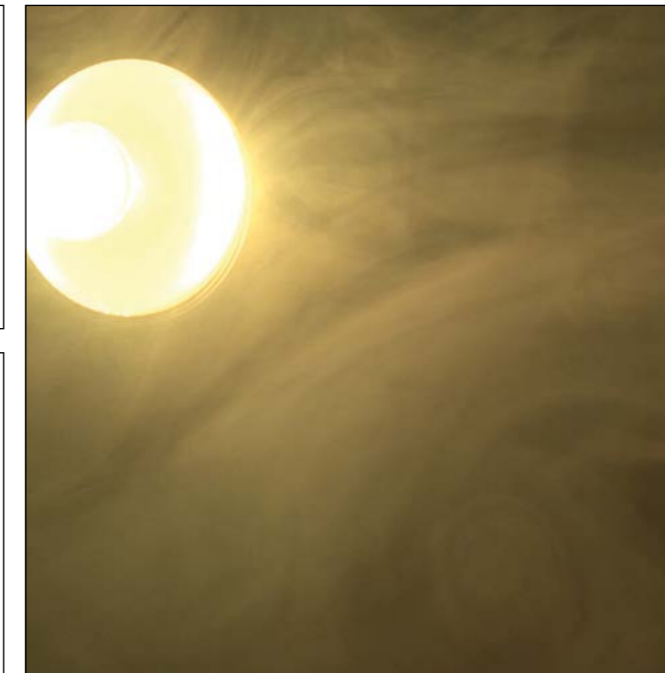


RRP 138,-€*

WATCH THE DEMO-VIDEO:



Model Name:	CLPSTMINITRI3W (black housing) / CLPSTMINITRI3WWH (white housing)
Product Type:	LED Par Can
Type:	Studio Mini PAR
Colour Range:	RGB
Number of LEDs:	7
LED Type:	3 W TRI Colour
Beam Angle:	25°
DMX Input:	XLR 3-pole
DMX Output:	XLR 3-pole
DMX Mode:	6-channel
DMX Functions:	RGB, Master Dimmer, Strobe, Colour Jump, Colour Fade
Standalone Modes:	Static Colour, Colour Change, Colour Fading, Sound Control, Slave
Controls:	Mode, Enter, Value Up, Value Down
Indicators:	LED Display
Power Connector:	Schuko
Housing Material:	Metal
Housing Colour:	Black / White
Type of cooling:	Convection
Illuminance (lx @ 1m):	4070 lx
Dimensions (without mounting bracket):	168 x 183 x 186 mm



STUDIO MINI PAR CAN COB 30W

30 W **COB LED PAR CAN** RGB IN BLACK OR WHITE HOUSING

The Cameo CLPSTMINICOB30W is a compact studio PAR light using the RGB additive system. With innovative chip-on-board technology and powered by a single 30W COB LED, the miniature fixture creates rich, natural colours and pastel hues alike with uniform coverage and a 55° beam angle. The CLPSTMINICOB30W provides DMX control in 2-channel, 3-channel 1, 3-channel 2 and 6-channel modes and a variety of functions including strobe effects. It is capable of master, slave and standalone operation and features a built-in microphone for sound activation. Mode, Enter, Value Up and Down keys and the clear LED display allow for easy menu access. The CLPSTMINICOB30W is available in black and white with easily adjustable twin brackets providing truss, floor and other mounting options.

- ▶ Powerful and innovative 30 W RGB COB LED
- ▶ For rich, natural colours and illumination uniformity
- ▶ Wide beam angle
- ▶ Operated via DMX, in master/slave mode or standalone mode
- ▶ Integrated microphone for sound control mode
- ▶ Simple to operate using the four buttons and LED display
- ▶ Double brackets included as standard
- ▶ Compact, sturdy metal housing



RRP **189,-€***

WATCH THE DEMO-VIDEO:



Model Name:	CLPSTMINICOB30W (black housing) / CLPSTMINICOB30WWH (white housing)
Product Type:	LED Par Can
Type:	Studio Mini PAR
Colour Range:	RGB
Number of LEDs:	1
LED Type:	30W COB
Beam Angle:	55°
DMX Input:	XLR 3-pole
DMX Output:	XLR 3-pole
DMX Mode:	2-channel, 3-channel 1, 3-channel 2, 6-channel
DMX Functions:	RGB, Master Dimmer, Strobe, Colour Jump, Colour Fade
Standalone Modes:	Static Colour, Colour Change, Colour Fading, Sound Control, Slave
Controls:	Mode, Enter, Value Up, Value Down
Indicators:	LED Display
Power Connector:	Schuko
Housing Material:	Metal
Housing Colour:	Black / White
Type of cooling:	Convection
Dimensions (without mounting bracket):	168 x 183 x 186 mm



OUTDOOR PAR TRI 12 IP 65

12 X 3W TRI COLOUR LED OUTDOOR PAR CAN

RGB IN BLACK HOUSING

The Cameo CLPSTTRI12IP is a heavy-duty PAR light with twelve 3-watt tri-colour LEDs for smooth RGB colour mixing and a focused 25° beam angle. It is especially intended for professional outdoor applications featuring purpose-designed screw connectors and an IP65 rating. The CLPSTTRI12IP can be controlled via DMX and provides a variety of colour macro, jump, fade and strobe functions. It is also capable of slave and standalone operation with Mode, Enter, Value Up and Down keys and a clear LED display permitting easy menu access. The Cameo CLPSTTRI12IP is equipped with dual brackets that are easily adjustable for multiple mounting options.

- ▶ 12 x 3 W High Power TRI RGB LEDs
- ▶ IP65 for outdoor use
- ▶ Operated via DMX, in master/slave mode or standalone mode
- ▶ Simple to operate using the four buttons and LED display
- ▶ Double brackets included as standard
- ▶ Rugged compact metal housing



RRP **238,-€***

WATCH THE DEMO-VIDEO:



Model Name:	CLPSTTRI12IP
Product Type:	LED Par Can
Type:	Outdoor PAR
Colour Range:	RGB
Number of LEDs:	12
LED Type:	3 W TRI Colour
Beam Angle:	25°
DMX Input:	3-pin special connector, screwable
DMX Output:	3-pin special connector, screwable
DMX Mode:	2-channel, 3-channel 1, 3-channel 2, 6-channel
DMX Functions:	RGB, Master Dimmer, Strobe, Colour Macro, Colour Jump, Colour Fade
Standalone Modes:	Static Colour, Colour Change, Colour Fading, Slave
Controls:	Mode, Enter, Value Up, Value Down
Indicators:	LED Display
Power Connector:	3-pin special connector, screwable
Housing Material:	Metal
IP Class:	65
Illuminance (lx @ 1m):	5900 lx
Dimensions (without mounting bracket):	203 x 203 x 193 mm



- ▶ 4 x 108 powerful, long-life 10 mm RGB LEDs
- ▶ Professional 28-mm TV spigot for mounting
- ▶ Optional footswitch for easy on stage controlling
- ▶ Operated via DMX, in master/slave mode or standalone mode
- ▶ Integrated microphone for sound control
- ▶ Simple to operate using the four buttons and LC-Display
- ▶ Sturdy metal housing
- ▶ Practical transport case included as standard



RRP 249,-€*

WATCH THE DEMO-VIDEO:



Also Available:
Set with lighting stand +
4 pedal foot switch

CLMPAR1SET2
RRP 338,-€*



MULTI PAR 1

COMPACT 432 X 10 MM LED LIGHTING SET INCL. TRANSPORT CASE

The four compact flat cans mounted on a bar with integrated control make the CLMPAR1 the ideal basic kit for stage lighting. Each of the four flat cans is fitted with 108 ultra-bright 10-mm LEDs, creating awe-inspiring brightness and the perfect colour mix. The CLMPAR1 is equipped with 3-pole inputs and outputs to enable actuation via DMX with 6, 9 or 15 channels. Alternatively, the CLMPAR1 can be actuated by an optional controller. Of course, the CLMPAR1 also works in standalone mode, with a microphone for sound control integrated into the bar. A 4-way foot controller is available as an optional extra. The CLMPAR1 is powered via a removable Schuko cable and is equipped with a 28-mm TV adapter for tripod-mounting. The practical transport case is included as standard.

Model Name:	CLMPAR1
Product Type:	Compact LED Lighting Set
Type:	4 Flat Can Bar
Colour Range:	RGB
Number of LEDs:	4 x 108
LED Type:	10 mm
Beam Angle:	25°
DMX Input:	XLR 3-pole
DMX Output:	XLR 3-pole
DMX Mode:	6/9/15-channel selectable
DMX Functions:	RGB, Master Dimmer, Strobe, Sound Control, Colour Jump, Colour Fade
Standalone Modes:	Static Colour, Colour Change, Colour Fading, Sound Control, Slave, Auto Mode
Remote Connector:	XLR-5 pole female
Controls:	Mode, Enter, Value Up, Value Down
Indicators:	LC-Display
Power Supply:	100 V AC - 250 V AC
Power Consumption:	50 W
Power Connector:	IECC Euro Power Socket male, IECC Euro Power Socket female
Housing Material:	Metal
Housing Colour:	Black
TV-Spigot:	28 mm
Dimensions:	1030 x 290 x 100 mm



- ▶ 4 x 7 ultra-bright 3W TRI RGB LEDs
- ▶ Professional 28-mm TV spigot for mounting
- ▶ Optional footswitch for easy on stage controlling
- ▶ Operated via DMX, in master/slave mode or standalone mode
- ▶ Integrated microphone for sound control
- ▶ Simple to operate using the four buttons and LC-Display
- ▶ Sturdy metal housing
- ▶ Practical transport case included as standard



RRP 478,-€*

WATCH THE DEMO-VIDEO:



Also Available:
Set with lighting stand +
4 pedal foot switch

CLMPAR2SET2
RRP 554,-€*



MULTI PAR 2

COMPACT 28 X 3W TRI COLOUR LED LIGHTING SET INCL. TRANSPORT CASE

The four compact flat cans mounted on a bar with integrated control make the CLMPAR2 the ideal basic kit for stage lighting. A total of 28 ultra-bright 3-Watt TRI colour LEDs create awe-inspiring brightness and a perfect colour mix. The CLMPAR2 is equipped with 3-pole inputs and outputs to enable actuation via DMX with 6, 9 or 15 channels. Alternatively, the CLMPAR2 can be actuated with an optional controller, which is connected via the corresponding five-pole cable. The four sturdy foot switches allow access to all of the show's key parameters. Of course, the CLMPAR2 also works in standalone mode, with a microphone for sound control integrated into it. The CLMPAR2 is powered via a removable Schuko cable and is equipped with a 28-mm TV adapter for tripod-mounting. The practical transport case is included as standard.

Model Name:	CLMPAR2
Product Type:	Compact LED Lighting Set
Type:	4 Flat Can Bar
Colour Range:	RGB
Number of LEDs:	4 x 7
LED Type:	3W TRI Colour
Beam Angle:	25°
DMX Input:	XLR 3-pole
DMX Output:	XLR 3-pole
DMX Mode:	6/9/15-channel selectable
DMX Functions:	RGB, Master Dimmer, Strobe, Sound Control, Colour Jump, Colour Fade
Standalone Modes:	Static Colour, Colour Change, Colour Fading, Sound Control, Slave, Auto Mode
Remote Connector:	XLR-5 pole female
Controls:	Mode, Enter, Value Up, Value Down
Indicators:	LC-Display
Power Supply:	100V AC - 250 V AC
Power Consumption:	100W
Power Connector:	IECC Euro Power Socket male, IECC Euro Power Socket female
Housing Material:	Metal
Housing Colour:	Black
TV-Spigot:	28 mm
Dimensions:	1030 x 290 x 100 mm



- ▶ 4 x 7 ultra-bright 8 W QUAD RGBW LEDs
- ▶ RGBW for perfect mixing of solid and pastel colours
- ▶ Professional 28-mm TV adapter for mounting
- ▶ Optional footswitch for easy on stage controlling
- ▶ IR-Remote included
- ▶ Operated via DMX, in master/slave mode or standalone mode
- ▶ Integrated microphone for sound control
- ▶ Simple to operate using the four buttons and LC-Display
- ▶ Heavy duty aluminium housing
- ▶ Practical transport case included as standard



RRP 698,-€*

WATCH THE DEMO-VIDEO:



Also Available:
Set with lighting stand +
4 pedal foot switch

CLMPAR3SET2
RRP 758,-€*

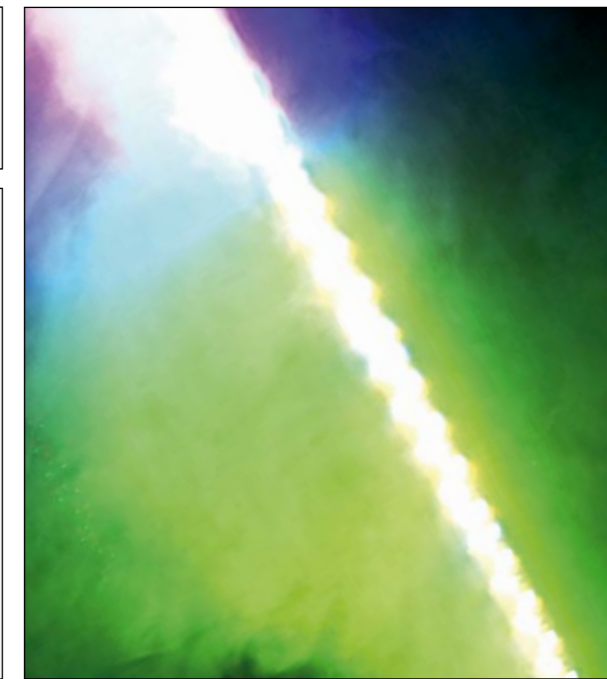
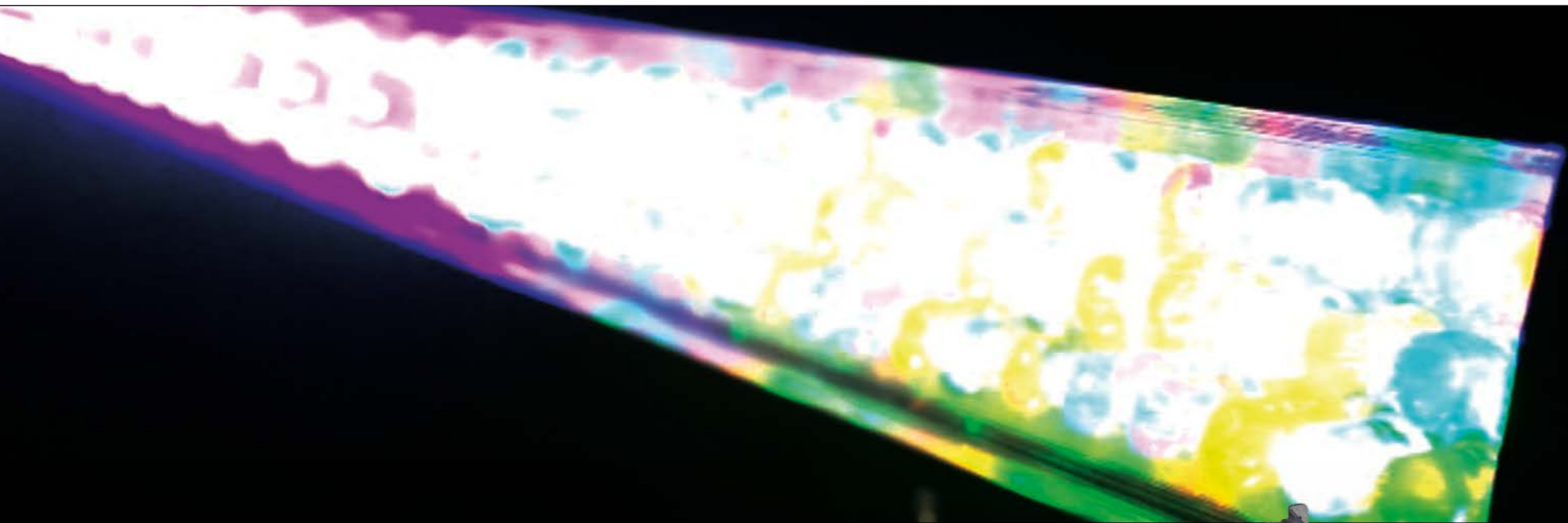


MULTI PAR 3

COMPACT 28 X 8 W QUAD COLOUR LED LIGHTING SET INCL. TRANSPORT CASE

The Cameo CLMPAR3 is an especially compact and flexible lighting system for professional requirements with maximum brightness and perfect RGBW colour mixing. The four flat PAR floodlights, each with seven ultrabright 8 W quad LEDs and 25° beam angle, are convection cooled and mounted on a bar with integral controls and all connectors so that they are individually aimable. Neutrik Powercon sockets are used for power supply and passing on incoming power; external components can be powered via two Schuko sockets that are switchable by remote control. The lighting system is controlled via DMX, the included IR remote control, an optional foot pedal or the clearly arranged, illuminated LC display with four function keys.

Model Name:	CLMPAR3
Product Type:	Compact LED Lighting Set
Type:	4 Flat Can Bar
Colour Range:	RGBW
Number of LEDs:	4 x 7
LED Type:	8 W QUAD Colour
Beam Angle:	25°
DMX Input:	XLR 3-pole
DMX Output:	XLR 3-pole
DMX Mode:	4-channel 1, 4-channel 2, 6-channel, 8-channel, 9-channel, 16-channel, 21-channel selectable
DMX Functions:	RGBW, Master Dimmer, Strobe, Sound Control, Program Mode, switchable power sockets 1/2
Standalone Modes:	Program Mode (Static Colour, Colour Change, Colour Fading,...), Sound Mode, Slave, Auto Run, Dimmer Mode
Standalone Features:	Flow Invert, Dimmer Curve, Master Dimmer
Remote Connector:	XLR-5 pole female
Controls:	Mode, Enter, Value Up, Value Down
Wireless Remote Control:	IR
Indicators:	2 x 16 Digit LC-Display
Power Supply:	90 V AC - 250 V AC
Power Consumption:	210 W
Power Connector:	Neutrik Powercon In/Out
Switchable Power Out:	2 x Schuko
Housing Material:	Metal
Housing Colour:	Black
Dimensions:	1030 x 290 x 100 mm



LED BAR

252 X 10 MM LED RGBA COLOUR BAR

The Cameo CLBARL10RGBA is a slim, versatile light bar: it can be used in clubs and discos, stage design and interior decorating, even in residential spaces. It has 252 powerful, long-life 10mm LEDs in the colours red, green, blue and amber which ensure brilliant, even lighting with the basic colours and any desired mixed colours with a defined beam angle of 30°. The Cameo bar can be controlled via 4, 6 or 19 DMX channels or operated in standalone mode. It is operated using buttons for mode, enter, up and down with an LCD display, and comes with a built-in microphone for sound control. The bar can be locked in position using the two mounting brackets and has two eyebolts for mounting and securing. In- and output power and DMX connectors on both ends make it possible to control multiple Cameo light bars in series. Moreover, it impresses with a low power consumption of 40W and minimal generation of heat.

Model Name:	CLBARL10RGBA
Product Type:	LED Colour BAR
Type:	WASHER
Colour Range:	RGBA
Number of LEDs:	252
LED Type:	10 mm
Beam Angle:	30°
DMX Input:	XLR 3-pole
DMX Output:	XLR 3-pole
DMX Mode:	4/6/19-channel selectable
DMX Functions:	RGBA, Master Dimmer, Strobe, Colour Jump, Colour Fade, Colour Macro
Standalone Modes:	Static Colour, Colour Change, Colour Fading, Sound Control, Slave, Auto Mode
Controls:	Mode, Enter, Value Up, Value Down
Indicators:	LED Display
Power Supply:	110 V AC - 250 V AC
Power Consumption:	40W
Power Connector:	Schuko
Housing Material:	Metal
Housing Colour:	Black
Dimensions (without mounting bracket):	1018 x 63 x 87 mm

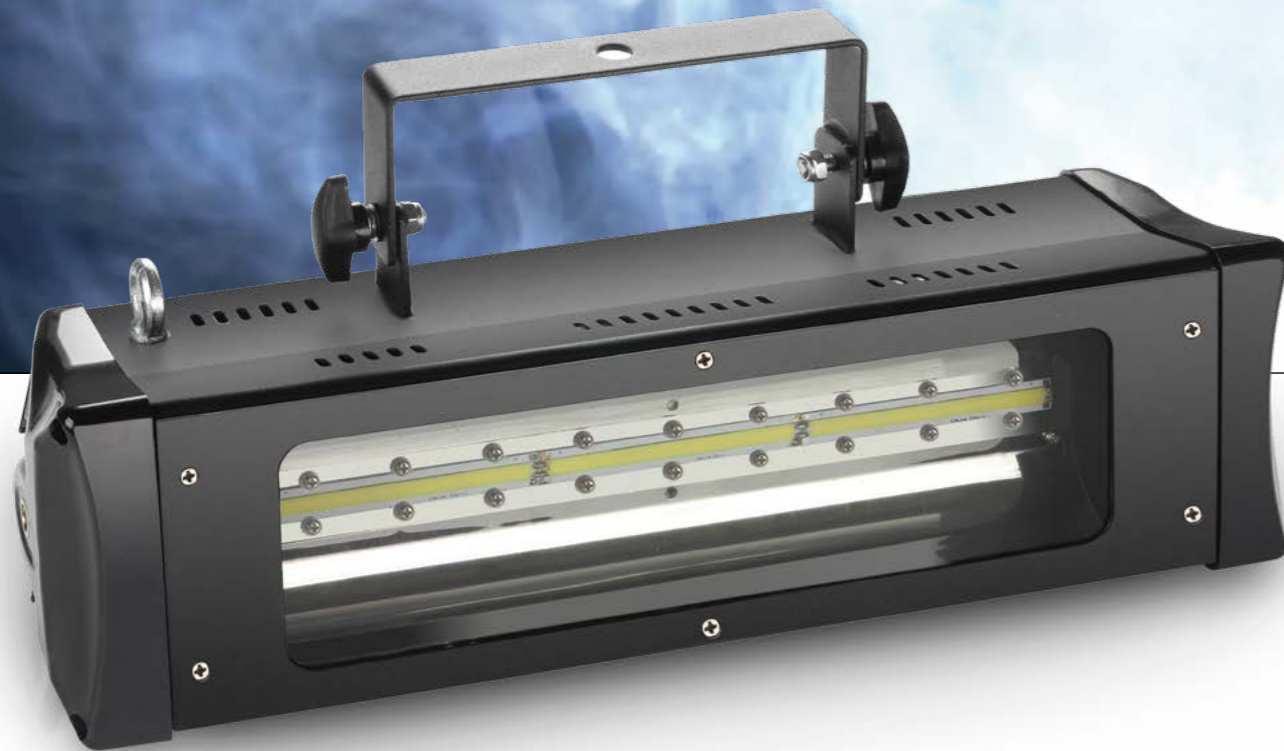
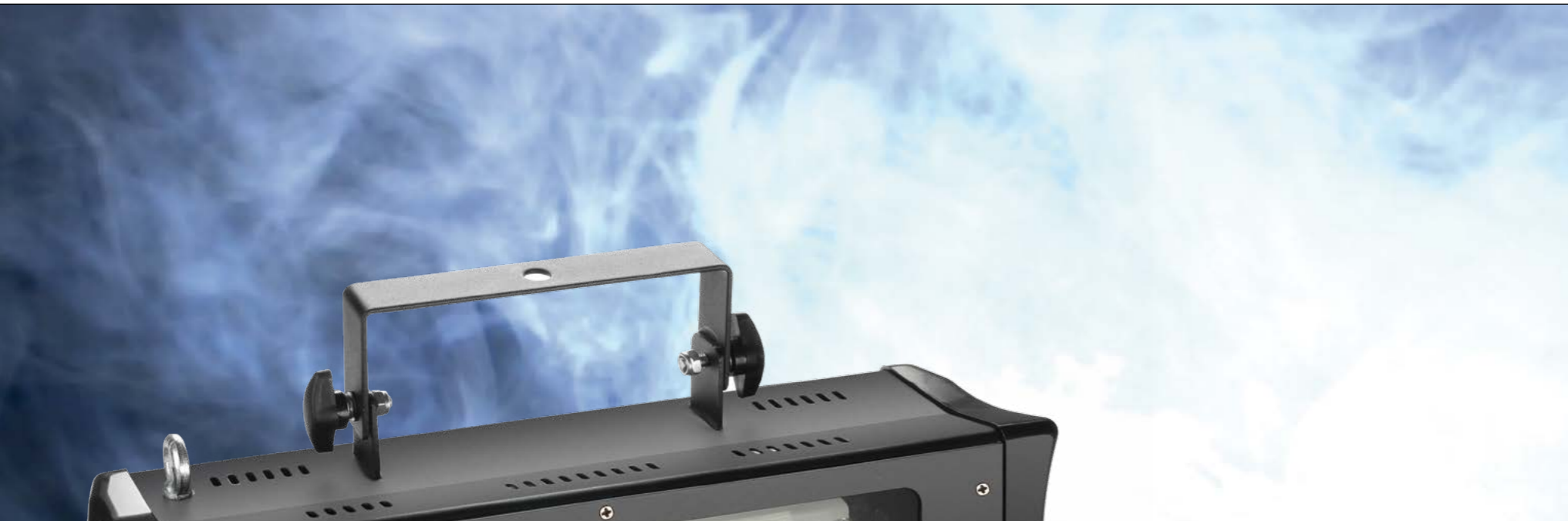
- ▶ 252 powerful, long-life 10 mm RGBA LEDs
- ▶ RGBA for warm, rich colour mixing
- ▶ Operated via DMX, in master/slave mode or standalone mode
- ▶ Integrated microphone for sound control
- ▶ Simple to operate using the four buttons and LED display
- ▶ Universal mounting brackets included
- ▶ Rugged slim metal housing



RRP 164,-€*

WATCH THE DEMO-VIDEO:





STROBE 1

HIGH QUALITY STROBE WITH 3 X 3.5W WHITE COB LEDs

The Cameo CLSTROBE1 is a high-quality LED strobe light with three 3.5-Watt white COB LEDs and 80° beam angle for large area coverage. It allows for DMX, slave and standalone operation with strobe, dimmer and sound activation modes. The flash rate is adjustable from 1 to 20 flashes per second for an intense strobe effect. Mode, Value Up and Down keys and a 3-digit LED display permit easy manual control. The compact lightweight CLSTROBE1 is easily portable, and an adjustable bracket provides multiple mounting options.

- ▶ Powerful 3 x 3,5W White COB LEDs
- ▶ Low power consumption
- ▶ Flash-rate adjustable (1-20 flashes/sec)
- ▶ Wide beam angle
- ▶ Operated via DMX, in master/slave mode or standalone mode
- ▶ Integrated microphone for sound control
- ▶ Simple to operate using the three buttons and LED display
- ▶ Universal mounting bracket included
- ▶ Compact, sturdy metal housing

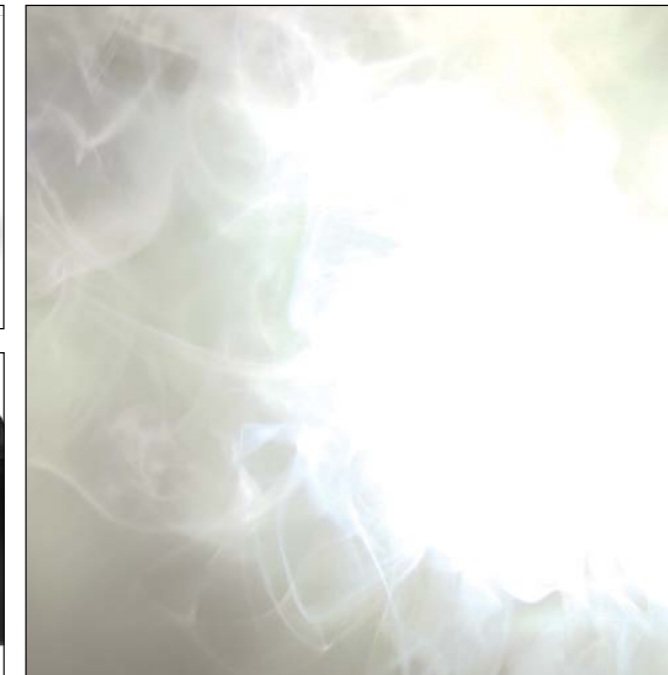


RRP **138,-€***

WATCH THE DEMO-VIDEO:



Model Name:	CLSTROBE1
Product Type:	Strobe
Type:	LED Strobe
Colour Range:	White
Number of LEDs:	3
LED Type:	3.5W White COB
Beam Angle:	80°
Flash Rate:	1-20 flashes/sec adjustable
DMX Input:	XLR 3-pole
DMX Output:	XLR 3-pole
DMX Mode:	2-channel
DMX Functions:	Flash Rate, Dimmer
Standalone Modes:	Flash Rate, Dimmer, Sound Mode, Slave
Controls:	Mode, Value Up, Value Down
Indicators:	3 Digit LED Display
Connectors:	Analog on- and output 6.3 mm jack
Power Connector:	Schuko
Housing Material:	Metal
Housing Colour:	Black
Dimensions (without mounting bracket):	380 x 95 x 165 mm



- ▶ Extremely Powerful 6 x 10W White COB LEDs
- ▶ Low power consumption
- ▶ Flash-rate adjustable (1-20 flashes/sec)
- ▶ Wide beam angle
- ▶ Operated via DMX, in master/slave mode or standalone mode
- ▶ Integrated microphone for sound control
- ▶ Simple to operate using the three buttons and LED display
- ▶ Universal mounting bracket included
- ▶ Compact, sturdy metal housing



RRP **229,-€***

WATCH THE DEMO-VIDEO:

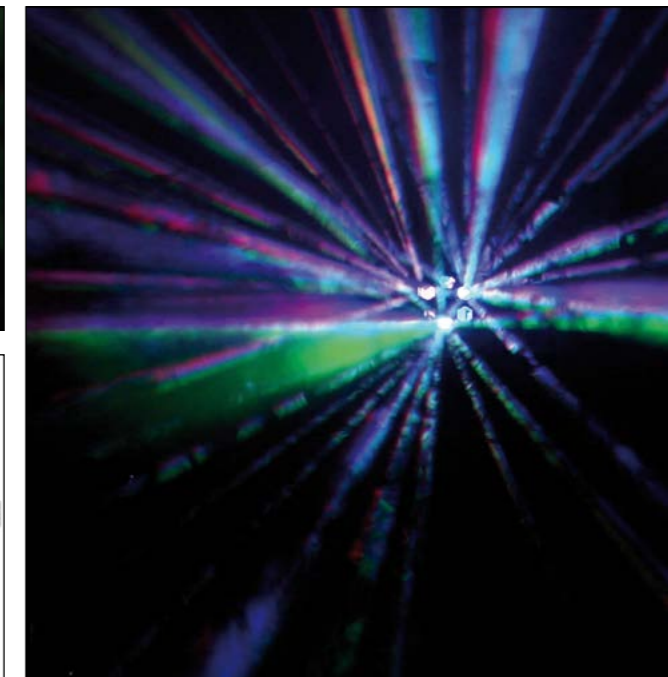
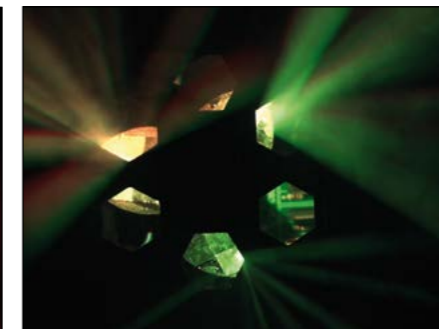


STROBE 2

EXTREMELY POWERFUL STROBE WITH 6 X 10W WHITE COB LEDs

The Cameo CLSTROBE2 is a high-power LED strobe light with six 10-Watt white COB LEDs and 80° beam angle for large area coverage. It allows for DMX, slave and standalone operation with strobe, dimmer and sound activation modes. The flash rate is adjustable from 1 to 20 flashes per second for an intense strobe effect. Mode, Value Up and Down keys and a 3-digit LED display permit easy manual control. The compact lightweight CLSTROBE2 is easily portable, and an adjustable bracket provides multiple mounting options.

Model Name:	CLSTROBE2
Product Type:	Strobe
Type:	LED Strobe
Colour Range:	White
Number of LEDs:	6
LED Type:	10W White COB
Beam Angle:	80°
Flash Rate:	1-20 flashes/sec adjustable
DMX Input:	XLR 3-pole
DMX Output:	XLR 3-pole
DMX Mode:	2-channel
DMX Functions:	Flash Rate, Dimmer
Standalone Modes:	Flash Rate, Dimmer, Sound Mode, Slave
Controls:	Mode, Value Up, Value Down
Indicators:	3 Digit LED Display
Connectors:	Analog on- and output 6.3 mm jack
Power Connector:	Schuko
Housing Material:	Metal
Housing Colour:	Black
Dimensions (without mounting bracket):	380 x 95 x 165 mm



MOONFLOWER

9W TRI COLOUR LED EFFECT LIGHT

An LED effect that makes a huge impression! Featuring a 9-Watt TRI colour LED as the light source and six lenses, the CLMOVER1 creates razor-sharp light beams that tear through the room. Colourful, fast and bright and always playing to the right beat thanks to the integral microphone and sound control function. They are actuated either via DMX protocol (3-pole XLR) with four control channels, in master/slave mode or in standalone mode via the sound control. The CLMOVER1 is quick and easy to operate using the four push buttons and an LED display. Its power consumption is a mere 30 Watts.

- ▶ 9W Ultra High Power TRI RGB LED
- ▶ Low power consumption
- ▶ Power in/out for daisy chaining
- ▶ Operated via DMX, in master/slave mode or standalone mode
- ▶ Integrated microphone for sound control
- ▶ Simple to operate using the four buttons and LED display
- ▶ Universal mounting bracket included
- ▶ Sturdy metal housing

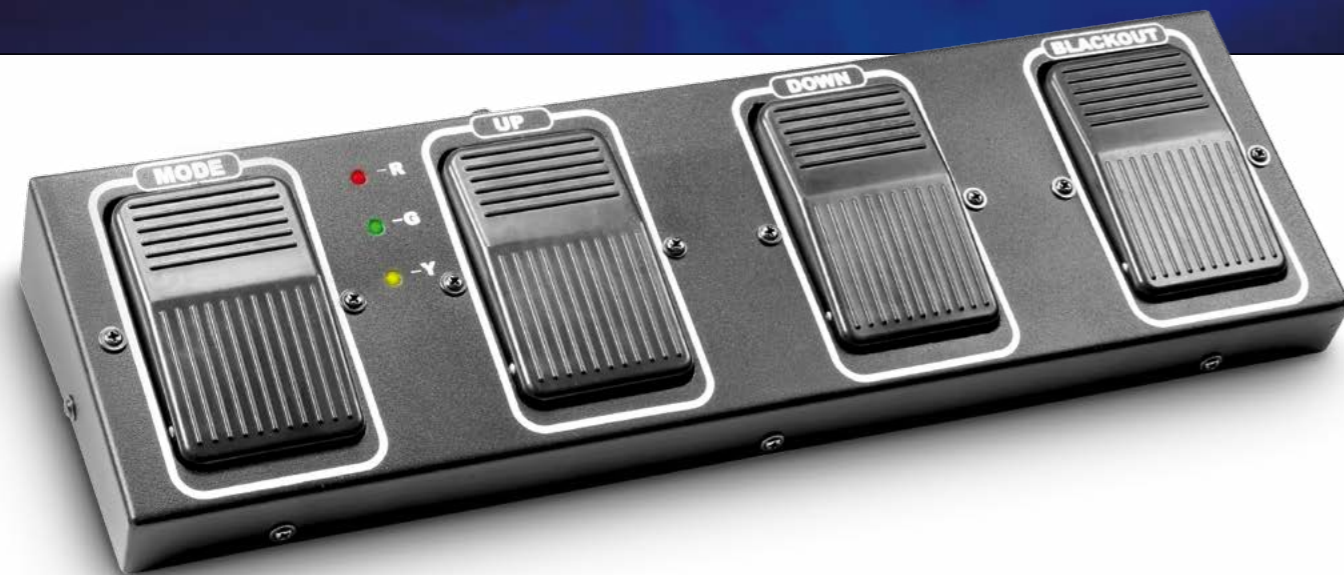


RRP 154,-€*

WATCH THE DEMO-VIDEO:



Model Name:	CLMOVER1
Product Type:	LED Effect Light
Type:	Moonflower
Colour Range:	RGB
Number of LEDs:	1
LED Type:	9 W TRI Colour
DMX Input:	XLR 3-pole male
DMX Output:	XLR 3-pole female
DMX Mode:	4-channel
DMX Functions:	Colour Selection, No Rotation, Clockwise Fast & Slow, Counter Clockwise Fast & Slow, Strobing Slow & Fast, Dimmer
Standalone Modes:	Auto Run, Sound Control
Controls:	Mode, Enter, Value Up, Value Down
Indicators:	LED Display
Power Supply:	100 V AC - 250 V AC
Power Consumption:	30 W
Power Connector:	IECC Euro Power Socket female
Housing Material:	Metal
Housing Colour:	Black
Dimensions (without mounting bracket):	250 x 177 x 240 mm
Features:	6 lenses for razor sharp beams



- ▶ Easy on stage control for CLMPAR1 and CLMPAR2 lighting sets
- ▶ Functions: black out, full on, sound control, static colour, auto run!
- ▶ 10 m 5-pin XLR connection cable included
- ▶ Rugged metal housing

RRP **52,-€***

MULTI PAR FOOT 4 PEDAL FOOT SWITCH FOR CLMPAR1 AND CLMPAR2

The CAMEO Multi PAR 4-switch foot pedal gives you optimum control of the CLMPAR1 and CLMPAR2 LED lighting system functions – even without connection to a DMX controller. All the functions can be activated via four solid, non-slip foot switches. Three indicator LEDs are integrated in the compact, solid housing of the Cameo Multi PAR 4-switch foot pedal. The device is connected via a ten-metre, five-pin XLR cable, supplied with the device.

Model Name:	CLMPARFOOT
Product:	Foot Switch
Controls:	Mode, Up, Down, Blackout, Microphone Sensitivity
Indicators:	Mode, Up, Down, Blackout, Microphone Sensitivity, On/Off
Connectors:	5-pole XLR male
Dimensions:	450 x 60 x 150 mm
Features:	10 m 5-pole XLR cable included



- ▶ Functions: black out, full on, sound control, static colours, light 1/2, auto run
- ▶ 10 m 5-pin XLR connection cable included
- ▶ Easy on stage control for CLMPAR3
- ▶ Rugged metal housing

RRP **54,-€***



MULTI PAR FOOT 2

4 PEDAL FOOT SWITCH FOR CLMPAR3

The CAMEO Multi PAR 4-switch foot pedal gives you optimum control of all CAMEO LED lighting system CLMPAR3 functions - even without connection to a DMX controller. All the functions can be activated via four solid, non-slip foot switches. Three indicator LEDs are integrated in the compact, solid housing of the Cameo Multi PAR 4-switch foot pedal. The device is connected via a ten-metre, five-pin XLR cable, supplied with the device.

Model Name:	CLMPARFOOT2
Product:	Foot Switch
Controls:	Mode, Up, Down, Blackout, Microphone Sensitivity
Indicators:	Mode, Up/Light 1, Down/Light 2, Blackout/Full on, Microphone Sensitivity, On/Off
Connectors:	5-pole XLR male
Dimensions:	450 x 60 x 150 mm
Features:	10 m 5-pole XLR cable included



CONTROL 6 6 CHANNEL DMX CONTROLLER

The Cameo CLCONTROL6 is an especially compact DMX controller with 6 channels that is perfect for controlling small lighting systems. It can be mounted in many ways and of course can also be used as a freestanding unit; it is extremely easy to operate. The CLCONTROL6 has 6 smoothly shifting faders for the individual DMX channels and a master fader. It can be powered using the included external power adapter or battery and thus is universally useable for manual control of DMX systems. A 3-pole XLR socket is used as the DMX output; a red LED serves as a power indicator. This straightforward lightweight impresses with clear functionality and high user friendliness.

- ▶ Universal 6-channel DMX controller
- ▶ Battery operation possible
- ▶ External power supply included
- ▶ Rugged metal housing

RRP 54,-€*

Model Name:	CLCONTROL6
Product:	DMX mixer
Type:	DMX 512 protocol
Number of DMX channels:	6
DMX output:	3-pole XLR female
Controls:	6 x channel faders, master fader
Indicators:	Power LED
Power supply:	External power adapter, 9 V block battery
Operating voltage:	9 - 12 V DC
Dimensions:	165 x 56 x 131 mm
Accessories (included):	AC Adapter, 9 V block battery



LED Technology

LEDs are extremely advantageous for the use in lighting systems: they are bright, emit very little heat, have a very long lifetime and low energy consumption. Also, LED fixtures often weigh less than conventional devices.



RGB additive Colour System

Additive colour mixes varying amounts of red, green and blue to produce other colours and white. The RGB system is used in television, computer monitors and digital cameras to name a few.



DMX512

Created in 1986, DMX512 is a communications standard for lighting equipment. Up to 32 DMX devices can be daisy-chained and controlled by a dedicated source, e.g. a lighting console. In a DMX512 daisy chain "network", the controller is called "master" while the daisy-chained devices are the "slaves."



"Master" and "Slave"

Simply put, this device is able to control or be controlled by other devices. In "master" mode and first in a chain, the device acts as a controller for devices ("slaves") that are connected to its output. In "slave" mode, the input of the device is connected to the output of a lighting console or "master." Devices that are daisy-chained to a slave's output also act as slaves.



Sound Control

In "sound to light" mode, the device is controlled by a built-in microphone capturing sounds to activate colour changes, e.g. the beat of the music.



Standalone Mode

In "standalone" mode, this device uses built-in programs to control its functions. There is no need for a lighting console or "master" controller.



Eco-Friendly

With highly efficient energy use, a very long LED lifetime and low heat emission this device is environmentally friendly.



RGB additive Colour System plus amber LEDs

Amber is a pure colour outside the RGB spectrum. Adding amber LEDs to the RGB system produces deeper, warmer, more saturated colours.



RGB additive Colour System plus white LEDs

Adding white LEDs to the RGB system produces more contrast and definition and enhances the RGB generated white and pastel colours.

ICON LEGEND



Tri-Colour RGB LEDs

Also called 3-in-1, RGB LEDs have red, green and blue emitters in a single LED. They are capable of producing the RGB additive colour spectrum and white.



Quad-Colour RGBA/RGBW LEDs

Also called 4-in-1, quad-colour LEDs add amber to the RGB spectrum for increased saturation, or white for improved contrast and definition.



Ingress Protection Rating of 65

The IP code rates the degree of protection against the intrusion of solid objects, water and access to hazardous parts. This device is completely protected against hazardous contact, water jets and ingress of dust.



Ingress Protection Rating of 44

The IP code rates the degree of protection against the intrusion of solid objects, water and access to hazardous parts. This device is protected against ingress of solid foreign parts larger than 1 mm (most wires, screws, etc.) and splashing water.



Strobe Lighting

Strobe lights emit a large number of periodic flashes per second seemingly freezing the movement of objects thus creating the illusion of slow motion.



COB LED Technology

The "chip-on-board" multi-LED array is a recent technology that produces a high-density large-area light source with high brightness and uniform diffusion for a rich wash of colours.



Infrared Remote Control

Featuring an IR sensor the device can be controlled via the included handheld wireless IR remote control.



Cold White

Referring to color temperature measured in Kelvin (K) "cold white" provides a very bright, clean light in the 5.000 - 10.000 K range with a somewhat artificial touch that goes well with deeply saturated primary colors.



Warm White

Referring to color temperature measured in Kelvin (K) "warm white" is in the 2.000 - 4.000 K range providing a soft light with a slight touch of yellow that is natural and pleasing to the eye.



YOUR LOCAL **CAMEO® LIGHT** DEALER:

Cameo® Light is a brand of the ADAM HALL Group

The information contained in this publication, including numerical data, has been prepared as a general guide to the products, but intending buyers and users must satisfy themselves as to the suitability and the safety of the products for their particular purposes and duties. No responsibility is assumed for any errors herein. The company reserves the right to alter the designs and material specifications of products shown in this publication without notice.

*Recommended Retail Price in Euros inclusive 19% German VAT.



www.cameolight.com

<http://www.facebook.com/cameolightandsound>

<http://www.youtube.com/cameolightandsound>